

PHILIPS

Patient Monitoring

Supplies catalog 2020





Table of contents

2	Gas monitoring	66	Non-invasive blood pressure
2	Anesthesia gas	66	Multi-patient cuffs
4	Spirometry CO ₂	72	Single-patient cuffs
5	Transcutaneous gas	80	Accessories and hoses
6	Capnography	82	Invasive blood pressure
6	Sidestream EtCO ₂	84	Paper
24	Mainstream EtCO ₂	85	Pulse oximetry
26	Cardiac output	85	Reusable sensors
28	ECG	88	Single-patient sensors
28	Electrodes	90	Adapter cables
38	Cables and leads	96	IntelliVue Cableless measurement
60	Telemetry adapters	100	Temperature
61	EEG	100	Continuous measurement
64	NMT	104	Spot check measurement
		107	Batteries
		111	Accessories

Gas monitoring

Anesthesia gas monitoring

Anesthesia gas

Ordering code	Alternative ordering code	Description	Packaging	Use with	Europe	USA
451261001391	M1662A	Anesthetic cal gas (use with M1659A) Volume of gas: 6 liters Shelf life: 1 year	1 cylinder	Anesthesia gas module: 862286, 862119; G1: 862165; G5: 862227	•	•
989803100311	13902A	Disposable elbow airway adapter, single-patient use	20 adapters	Anesthesia gas module: 862119; G1: 862165; G5: 862227; G7m: 866173	•	•
989803100361	13907A	Calibration tube assembly	1 assembly	Anesthesia gas analyzer: 453563372301, 453563372311; Microstream® ext.: 862393, 865377	•	•
989803100841	15210-64010	Gas: Cal 1 cylinders for tcpCO ₂	6 cylinders	Microstream® ext.: 862393, 865377	•	•
989803100851	15210-64020	Gas: Cal 2 cylinders for tcpCO ₂	6 cylinders		•	•
989803104441	M1612A	Straight airway adapter, single-patient use	20 adapters	Anesthesia gas module: 862286, 862119; G1: 862165; G5: 862227; G7m: 866173	•	•
989803104671	M1658A	Gas sample tubing for single-patient use (use with M1657B)	20 tubes	G7m: 866173	•	•
989803104681	M1659A	Calibration bag (use with M1660A and M1662A)	1 bag	Anesthesia gas module: 862119; G1: 862165; G5: 862227	•	•
989803110871	M1657B	Water trap (use with M1658A)	25 water traps	G1: 862165; G5: 862227; G7m: 866173	•	•
989803145671	M1655B	Reusable gas exhaust return line Length: 3.6 m (12 ft)	1 line/5 filters	Anesthesia gas module: 862119 (not in US); G1: 862165; G5: 862227; G7m: 866173	•	•
989803145681	M1656B	Disposable gas exhaust return filter (use with M1655B)	20 filters	Anesthesia gas module: 862286, 862119 (not in US); G1: 862165; G5: 862227; G7m: 866173	•	•
989803191081		Water trap	12 water traps	G7m: 866173	•	•



451261001391
M1662A



989803100311
13902A



989803100361
13907A



989803100841
15210-64010



989803100851
15210-64020



989803104441
M1612A



989803104671
M1658A



989803104681
M1659A



989803110871
M1657B



989803145671
M1655B



989803145681
M1656B



989803191081

Gas monitoring

Spirometry CO₂

IntelliVue Spirometry CO₂ sensors

Ordering code	Alternative ordering code	Description	Packaging	Use with	Europe	USA
989803144661	M2785A	Flow sensor, adult/pediatric, single-patient use ET: > 4.0 mm (0.16 in)	10 sensors	Spirometry module: 865021	•	•
989803144671	M2786A	Flow sensor, infant/neonatal, single-patient use ET: > 4.0 mm (0.16 in)	10 sensors		•	•



989803144661
M2785A



989803144671
M2786A

Transcutaneous gas monitoring

Transcutaneous gas

Ordering code	Alternative ordering code	Description	Packaging	Use with	Europe	USA
989803100841	15210-64010	Cal 1 gas cylinders for calibration (meets international shipping requirements)	6 cylinders	tcpO ₂ module: 862283; Calibration unit: 15210B; tcpO ₂ transducer: 989803105521, 989803159631 Microstream® ext.: 862393, 865377	•	•
989803100851	15210-64020	Cal 2 gas cylinders for calibration (meets international shipping requirements)	6 cylinders		•	•



989803100841
15210-64010



989803100851
15210-64020

Capnography

Sidestream CO₂ LoFlo Sidestream CO₂ sensor

Ordering code	Alternative ordering code	Description	Packaging	Use with	Europe	USA
989803144591	M2741A	Sidestream CO ₂ sensor	1 sensor	Capnography ext.: 862187; MP2: 865040; MP5: 865024; X2: 865039; X3: 867030; MX100: 867033; CM10: 863301, 863365; CM12: 863303, 863366; CM100: 863300; CM120: 863302; CM150: 863304; DFM100: 866199; HeartStart XL+: 861290	•	•



989803144591
M2741A

Capnography

Sidestream CO₂

LoFlo Sidestream CO₂, non-intubated, long-term, with O₂ delivery

Ordering code	Alternative ordering code	Description	Packaging	Use with	Europe	USA
989803197931		CO ₂ / O ₂ nasal cannula, adult	10 cannulas	Sidestream LoFlo sensor: M2741A with Capnography ext.: 862187, X2: 865039; MP2: 865040; MP5: 865024;	•	•
989803197941		CO ₂ / O ₂ nasal cannula, pediatric	10 cannulas		•	•
989803197951		CO ₂ / O ₂ nasal cannula, infant	10 cannulas		•	•
989803197981		CO ₂ / O ₂ oral-nasal cannula, adult	10 cannulas		•	•
989803197991		CO ₂ / O ₂ oral-nasal cannula, pediatric	10 cannulas		•	•



989803197931



989803197941



989803197951



989803197981



989803197991

Sidestream CO₂ LoFlo Sidestream CO₂, non-intubated, long-term, without O₂ delivery

Ordering code	Alternative ordering code	Description	Packaging	Use with	Europe	USA
989803197901		CO ₂ nasal cannula, adult	10 cannulas	Sidestream LoFlo sensor: M2741A with Capnography ext.: 862187, X2: 865039; MP2: 865040; MP5: 865024;	•	•
989803197911		CO ₂ nasal cannula, pediatric	10 cannulas		•	•
989803197921		CO ₂ nasal cannula, infant	10 cannulas		•	•
989803197961		CO ₂ oral-nasal cannula, adult	10 cannulas		•	•
989803197971		CO ₂ oral-nasal cannula, pediatric	10 cannulas		•	•



989803197901



989803197911



989803197921



989803197961



989803197971

Capnography

Sidestream CO₂

LoFlo Sidestream CO₂, intubated, short-term

Ordering code	Alternative ordering code	Description	Packaging	Use with	Europe	USA
989803144521	M2768A	Airway adapter set ET: > 4.0 mm (0.16 in)	10 sets	Sidestream LoFlo sensor: M2741A with Capnography ext.: 862187; MP2: 865040; MP5: 865024; X2: 865039; X3: 867030; MX100: 867033; CM10: 863301, 863365; CM12: 863303, 863366; CM100: 863300; CM120: 863302; CM150: 863304; DFM100: 866199; HeartStart XL+: 861290	•	•
989803144531		Airway adapter set ET ≤ 4.0 mm (0.16 in)	10 sets		•	•



989803144521
M2768A



989803144531

Sidestream CO₂ LoFlo Sidestream CO₂, intubated, long-term with humidification

Ordering code	Alternative ordering code	Description	Packaging	Use with	Europe	USA
989803144541	M2772A	Airway adapter set H ET: > 4.0 mm (0.16 in)	10 sets	Sidestream LoFlo sensor: M2741A with Capnography ext.: 862187; MP2: 865040; MP5: 865024; X2: 865039; X3: 867030; MX100: 867033; CM10: 863301, 863365; CM12: 863303, 863366; CM100: 863300; CM120: 863302; CM150: 863304; DFM100: 866199; HeartStart XL+: 861290	•	•
989803144551	M2773A	Airway adapter set H ET: <= 4.0 mm (0.16 in)	10 sets		•	•



989803144541
M2772A



989803144551
M2773A

Capnography

Sidestream CO₂

LoFlo Sidestream CO₂, non-intubated, short-term, with O₂ delivery

Ordering code	Alternative ordering code	Description	Packaging	Use with	Europe	USA
989803144451	M2750A	CO ₂ / O ₂ nasal cannula, adult	10 cannulas	Sidestream LoFlo sensor: M2741A with Capnography ext.: 862187, X2: 865039; MP2: 865040; MP5: 865024	•	•
989803144461	M2751A	CO ₂ / O ₂ nasal cannula, pediatric	10 cannulas		•	•
989803144471		CO ₂ / O ₂ nasal cannula, infant/neonatal	10 cannulas		•	•
989803144501	M2760A	CO ₂ / O ₂ oral-nasal cannula, adult	10 cannulas		•	•
989803144511	M2761A	CO ₂ / O ₂ oral-nasal cannula, pediatric	10 cannulas		•	•



989803144451
M2750A



989803144461
M2751A



989803144501
M2760A



989803144511
M2761A

Capnography

Sidestream CO₂

LoFlo Sidestream CO₂, non-intubated, short-term, without O₂ delivery

Ordering code	Alternative ordering code	Description	Packaging	Use with	Europe	USA
989803144421	M2744A	CO ₂ nasal cannula, adult	10 cannulas	Sidestream LoFlo sensor:: M2741A with Capnography ext.: 862187, X2: 865039; MP2: 865040; MP5: 865024	•	•
989803144431	M2745A	CO ₂ nasal cannula, pediatric	10 cannulas		•	•
989803144441	M2746A	CO ₂ nasal cannula, infant	10 cannulas		•	•
989803144481	M2756A	CO ₂ oral-nasal cannula, adult	10 cannulas		•	•
989803144491	M2757A	CO ₂ oral-nasal cannula, pediatric	10 cannulas		•	•



989803144421
M2744A



989803144431
M2745A



989803144441
M2746A



989803144481
M2756A



989803144491
M2757A



Capnography

Sidestream CO₂ Sidestream CO₂ supplies

Ordering code	Alternative ordering code	Description	Packaging	Use with	Europe	USA
989803100311	13902A	Elbow airway adapter, single-patient use	20 adapters	Sidestream module: 862281; Mainstream CO ₂ module: 862282	•	•
989803104441	M1612A	Straight airway adapter, single-patient use	20 adapters	Sidestream module: 862281	•	•
989803144561	M2776A	Straight sample line, non-humidified	10 lines	Sidestream LoFlo sensor: M2741A with Capnography ext.: 862187; MP2: 865040; MP5: 865024; X2: 865039; X3: 867030; MX100: 867033; CM10: 863301, 863365; CM12: 863303, 863366; CM100: 863300; CM120: 863302; CM150: 863304; DFM100: 866199; HeartStart XL+: 861290	•	•
989803144571	M2777A	Straight sample line H, humidified	10 lines		•	•
989803199061		LoFlo extension line, length: 1.52 m (60 in)	25 lines	Sidestream LoFlo sensor:: M2741A with Capnography ext.: 862187; MP2: 865040; MP5: 865024; X2: 865039; X3: 867030; MX100: 867033; CM10: 863301, 863365; CM12: 863303, 863366; CM100: 863300; CM120: 863302; CM150: 863304; DFM100: 866199; HeartStart XL+: 861290	•	



989803100311
13902A



989803104441
M1612A



989803144561
M2776A



989803144571
M2777A



989803199061

Sidestream CO₂ CapnoTrak sidestream CO₂ supplies

Ordering code	Alternative ordering code	Description	Packaging	Use with	Europe USA
989803199011		Water filter assembly	10	CM10: 863301, 863365; CM12: 863303, 863366;	•
989803199021		CO ₂ sampling extension line	25 lines	CM100: 863300; CM120: 863302; CM150: 863304; Heartstart Intrepid: 867172	•
989803199031		O ₂ delivery extension line	25 lines		•
989803199041		Dehumidification tubing	10 tubes		•



989803199011



989803199021



989803199031



989803199041

Capnography

Sidestream CO₂ CapnoTrak Sidestream CO₂, intubated, short-term

Ordering code	Alternative ordering code	Description	Packaging	Use with	Europe USA
989803198991		CapnoTrak Sidestream CO ₂ airway adapter set, intubated, short-term ET: > 4.0 mm (0.16 in)	25 sets	CM10: 863301, 863365; CM12: 863303, 863366; CM100: 863300; CM120: 863302; CM150: 863304; Heartstart Intrepid: 867172	•
989803199001		CapnoTrak Sidestream CO ₂ airway adapter set, intubated, short-term ET: <= 4.0 mm (0.16 in)	25 sets		•



989803198991



989803199001

Capnography

Sidestream CO₂ CapnoTrak Sidestream CO₂, non-intubated, short-term, with O₂ delivery

Ordering code	Alternative ordering code	Description	Packaging	Use with	Europe USA
989803198921		CO ₂ / O ₂ nasal cannula, large	25 cannulas	CM10: 863301, 863365; CM12: 863303, 863366;	•
989803198931		CO ₂ / O ₂ nasal cannula, medium	25 cannulas	CM100: 863300; CM120: 863302; CM150:	•
989803198941		CO ₂ / O ₂ nasal cannula, small	25 cannulas	863304; Heartstart Intrepid: 867172	•
989803198971		CO ₂ / O ₂ oral-nasal cannula, large	25 cannulas		•
989803198981		CO ₂ / O ₂ oral-nasal cannula, medium	25 cannulas		•



989803198921



989803198931



989803198941



989803198971



989803198981

Capnography

Sidestream CO₂

CapnoTrak Sidestream CO₂, non-intubated, short-term, without O₂ delivery

Ordering code	Alternative ordering code	Description	Packaging	Use with	Europe USA
989803198891		CO ₂ nasal cannula, large	25 cannulas	CM10: 863301, 863365; CM12: 863303, 863366;	•
989803198901		CO ₂ nasal cannula, medium	25 cannulas	CM100: 863300; CM120: 863302; CM150:	•
989803198911		CO ₂ nasal cannula, small	25 cannulas	863304; Heartstart Intrepid: 867172	•
989803198951		CO ₂ oral-nasal cannula, large	25 cannulas		•
989803198961		CO ₂ oral-nasal cannula, medium	25 cannulas		•



989803198891



989803198901



989803198911



989803198951



989803198961



Capnography

Sidestream CO₂ IntelliVue Microstream® CO₂ solution

Ordering code	Alternative ordering code	Description	Packaging	Use with	Europe	USA
989803105531	M1920A	FilterLine® set, adult/pediatric, intubated	25 FilterLines®	Microstream® ext.: 862393, 865377; MP5: 865024, 865322; VM8: 863066, VM1: 863266 CM10: 863301, 863365; CM12: 863303, 863366; CM100: 863300; CM120: 863302; CM150: 863304	•	•
989803105541	M1921A	FilterLine® H set, adult/pediatric, intubated	25 FilterLines®		•	•
989803105561	M1923A	FilterLine® H set, infant/neonatal, intubated	25 FilterLines®		•	•
989803106081	M2267A	Calibration regulator, reusable	1 regulator		•	•
989803129731	M2520A	Smart CapnoLine® O ₂ , pediatric	25 FilterLines®		•	•
989803129751	M2522A	Smart CapnoLine® O ₂ , adult/intermediate	25 FilterLines®		•	•
989803129761	M2524A	Smart CapnoLine® pediatric	25 FilterLines®		•	•
989803129781	M2526A	Smart CapnoLine® adult/intermediate	25 FilterLines®		•	•
989803131621	M4680A	CapnoLine® H O ₂ , adult	25 FilterLines®		•	•
989803131631	M4681A	CapnoLine® H O ₂ , pediatric	25 FilterLines®		•	•
989803131641	M4686A	NIV, adult	25 FilterLines®		•	•
989803131651	M4687A	NIV, pediatric	25 FilterLines®		•	•
989803131661	M4689A	CapnoLine® H, adult	25 FilterLines®		•	•
989803131681	M4691A	CapnoLine® H, infant/neonatal	25 FilterLines®		•	•
989803159571		VitaLine™ H set, adult/pediatric	25 FilterLines®		•	•
989803159581		VitaLine™ H set, infant/neonatal	25 FilterLines®		•	•
989803160241		FilterLine® set, adult/pediatric, long	25 FilterLines®		•	•
989803160251		FilterLine® H set, adult/pediatric, long	25 FilterLines®		•	•
989803160261		FilterLine® H set, infant/neonatal, long	25 FilterLines®		•	•
989803160271		Smart CapnoLine® O ₂ pediatric, long	25 FilterLines®		•	•
989803160281		Smart CapnoLine® O ₂ Plus adult, long	25 FilterLines®	•	•	
989803160301		Smart CapnoLine® Plus adult, long	25 FilterLines®	•	•	
989803177951		Smart CapnoLine® H O ₂ , adult	25 FilterLines®	•	•	

Capnography

Sidestream CO₂ IntelliVue Microstream® CO₂ solution

Ordering code	Alternative ordering code	Description	Packaging	Use with	Europe	USA
989803177961		Smart CapnoLine® H O ₂ , adult, long	25 FilterLines®	Microstream® ext.: 862393, 865377; MP5: 865024, 865322; VM8: 863066, VM1: 863266 CM10: 863301, 863365; CM12: 863303, 863366; CM100: 863300; CM120: 863302; CM150: 863304	•	•
989803177971		Smart CapnoLine® H O ₂ , pediatric	25 FilterLines®		•	•
989803177981		Smart CapnoLine® H O ₂ , pediatric, long	25 FilterLines®		•	•
989803178001		CapnoLine® H O ₂ , infant/neonatal	25 FilterLines®		•	•
989803178011		CapnoLine® H, infant/neonatal, long	25 FilterLines®		•	•
989803178021		Nasal FilterLine®, infant/neonatal	25 FilterLines®		•	•
989803178031		Smart CapnoLine® Guard	25 FilterLines®		•	•
989803178041		Smart CapnoLine® Guard O ₂	25 FilterLines®		•	•
989803178051		Smart CapnoLine® Guard O ₂ , long	25 FilterLines®		•	•
989803179101		Nasal FilterLine® O ₂ , adult	25 FilterLines®		•	•
989803179111		Nasal FilterLine® O ₂ , adult, long	25 FilterLines®		•	•
989803179121		Nasal FilterLine® O ₂ , pediatric	25 FilterLines®		•	•



989803105531
M1920A



989803105541
M1921A



989803105561
M1923A



989803106081
M2267A



989803129731
M2520A



989803129751
M2522A



989803129761
M2524A



989803129781
M2526A



989803131621
M4680A



989803131631
M4681A



989803131641
M4686A



989803131651
M4687A



989803131661
M4689A



989803131681
M4691A



989803159571



989803159581



989803160241



989803160251



989803160261



989803160271



989803160281



989803160301



989803177951



989803177961



989803177971



989803177981



989803178001



989803178011



989803178021



989803178031



989803178041 and 989803178051
(2 m and 4 m version)



989803179101



989803179111



989803179121

Capnography

Mainstream CO₂ solution

Ordering code	Alternative ordering code	Description	Packaging	Use with	Europe	USA
989803142651	M2501A	Mainstream CO ₂ sensor	1 sensor	Capnography ext.: 862187; MP2: 865040; MP5: 865024, 865322; X2: 865039; X3: 867030;	•	•
989803142661	M2533A	Single-patient use adult airway adapter ET: > 4.0 mm (0.16 in)	10 adapters	MX100: 867033; CM10: 863301, 863365;	•	•
989803142671	M2536A	Single-patient use infant airway adapter ET: < 4.0 mm (0.16 in) Deadspace: < 1 cc		CM12: 863303, 863366; CM100: 863300; CM120: 863302; CM150: 863304; DFM100: 866199; HeartStart XL+: 861290	•	•
989803142681	M2513A	Reusable adult/pediatric airway adapter ET: > 4.0 mm (0.16 in)	1 adapter		•	•
989803142691	M2516A	Reusable adult/pediatric airway adapter ET: < 4.0 mm (0.16 in) Deadspace: < 1 cc			•	•
989803142711	M2506A	Verification gas	1 gas cylinder	Mainstream CO ₂ sensor: M2501A, MP2: 865040; X2: 865039; X3: 867030	•	•



989803142651
M2501A



989803142661
M2533A



989803142671
M2536A



989803142681
M2513A



989803142691
M2516A



989803142711
M2506A

Cardiac output

Invasive cardiac output

Ordering code	Alternative ordering code	Description	Packaging	Use with	Europe	USA
989803101031	23001A	Reusable injectate temp probe to measure cardiac output For use with Baxter CO-Set™ kit only Length: 2.4 m (7.9 ft)	1 probe	C.O module: 862279; Hemodynamic ext.: 862111; Capnography ext.: 862187; Xper Flex Cardio: 860335, 860338	•	•
989803101041	23001B	Reusable injectate temp probe to measure cardiac output For use with Baxter CO-Set™ kit only Length: 0.5 m (1.6 ft)	1 probe		•	•
989803101051	23002A	Ice bath temperature probe	1 probe	CM12: 863303, 863366; CM120: 863302; CM150: 863304; C.O. module: 862279; Hemodynamic ext.: 862111; XPER Flex Cardio: 860335, 860338	•	•
989803104611	M1642A	Cardiac output cable	1 cable	CM12: 863303, 863366; CM120: 863302; CM150: 863304; C.O. module: 862279; Hemodynamic ext.: 862111	•	•
989803104621	M1643A	Cardiac output cable for use with pulse contour analysis and transpulmonary thermodilution Length: 4.8 m (15.7 ft)	1 cable	C.O. module: 862279; Hemodynamic ext.: 862111; Capnography ext.: 862187; XPER Flex Cardio: 860335, 860338	•	•
989803110861	M1646A	PICCO temperature probe to measure cardiac output (not available in North America)	1 probe	Hemodynamic ext.: 862111	•	•



989803101031
23001A



989803101041
23001B



989803101051
23002A



989803104611
M1642A



989803104621
M1643A



989803110861
M1646A

Electrodes

Single-patient use adult ECG monitoring electrodes

Ordering code	Alternative ordering code	Description	Packaging	Use with	Europe	USA
989803101671	40493D	Wet gel ECG electrode, adult, foam Shelf life: 6 months, diameter: 55 mm (2.13 in)	5 electrodes/pouch 15 pouches/box 4 boxes/case (300 electrodes/case)	Adult ECG monitoring: IntelliVue, Avalon; Cableless Toco+ MP transducer: 866075; Cableless ECG/IUP transducer: 866077	•	•
989803101681	40493E	Wet gel ECG electrode, adult, foam Shelf life: 6 months, diameter: 54 mm (2.13 in)	30 electrodes/pouch 10 pouches/box (300 electrodes/box)		•	•
989803105971	M2202A	Radiotranslucent foam electrode, adult Shelf life: 6 months, diameter: 50 mm (1.97 in)	30 electrodes/pouch 10 pouches/box (300 electrodes/box)	Adult ECG monitoring: IntelliVue	•	•
989803129091	M4612A	Solid gel ECG electrode, adult, foam, teardrop shape Shelf life: 6 months, diameter: 50 mm (1.97 in)	5 electrodes/pouch 60 pouches/box (300 electrodes/box)		•	•
989803129101	M4613A	Solid gel ECG electrode, adult, foam, teardrop shape Shelf life: 6 months, diameter: 50 mm (1.97 in)	30 electrodes/pouch 10 pouches/box (300 electrodes/box)		•	•
989803148821		Solid gel ECG electrode, small adult, radiolucent foam Shelf life: 6 months, size: 35 x 40 mm (1.4 x 1.6 in)	30 electrodes/pouch 20 pouches/box (600 electrodes/box)	Adult ECG monitoring: IntelliVue and Efficia	•	•
989803192551		Wet gel ECG electrode, adult, clear tape	30 electrodes/pouch 10 pouches/box (300 electrodes/box)	Adult ECG monitoring: IntelliVue	•	•



989803101671
40493D



989803101681
40493E



989803129091
M4612A



989803129101
M4613A



989803148821



989803192551

Electrodes

Single-patient use adult metallic ECG lead wire electrodes – AAMI color coding

Ordering code	Alternative ordering code	Description	Packaging	Use with	Europe	USA
989803156201		Pre-attached metallic 3-lead wire (0.91 m / 36 in) electrode set, non-shielded, solid gel Shelf life: 24 months unopened, dimensions: 30 x 45 mm (1.18 x 1.77 in)	3 electrodes/set 1 set/pouch 100 pouches/box (300 electrodes/box)	Adult ECG monitoring: IntelliVue	•	•
989803156221		Pre-attached radiolucent 3-lead wire (0.91 m / 36 in) electrode set, non-shielded, solid gel Shelf life: 24 months unopened, dimensions: 30 x 45 mm (1.18 x 1.77 in)	3 electrodes/set 1 set/pouch 100 pouches/box (300 electrodes/box)		•	•
989803156241		Pre-attached metallic 5-lead wire (0.91 m / 36 in) electrode set, non-shielded, solid gel Shelf life: 24 months unopened, dimensions: 30 x 45 mm (1.18 x 1.77 in)	5 electrodes/set 1 set/pouch 60 pouches/box (300 electrodes/box)		•	•
989803156261		Pre-attached radiolucent 5-lead wire (0.91 m / 36 in) electrode set, non-shielded, solid gel Shelf life: 24 months unopened, dimensions: 30 x 45 mm (1.18 x 1.77 in)	5 electrodes/set 1 set/pouch 60 pouches/box (300 electrodes/box)		•	•



989803156201



989803156241

Electrodes

Single-patient use adult radiolucent ECG lead wire electrodes – IEC color coding

Ordering code	Alternative ordering code	Description	Packaging	Use with	Europe USA
989803156231		Pre-attached radiolucent 3-lead wire (1.0 m / 39.4 in) electrode set, non-shielded, solid gel Shelf life: 24 months unopened, dimensions: 30 x 45 mm (1.18 x 1.77 in)	3 electrodes/set 1 set/pouch 100 pouches/box (300 electrodes/box)	Adult ECG monitoring: IntelliVue	•
989803156271		Pre-attached radiolucent 5-lead wire (1.0 m / 39.4 in) electrode set, non-shielded, solid gel Shelf life: 24 months unopened, dimensions: 30 x 45 mm (1.18 x 1.77 in)	5 electrodes/set 1 set/pouch 60 pouches/box (300 electrodes/box)		•



989803156231



989803156271

Electrodes

Single-patient use pediatric ECG monitoring electrodes

Ordering code	Alternative ordering code	Description	Packaging	Use with	Europe	USA
989803100491	13951C	Disposable, repositionable solid gel electrode, snap 3 electrodes mounted on plastic card Shelf life: 6 months, dimensions: 22 x 33 mm (0.87 x 1.30 in)	3 electrodes/pouch 100 pouches/box (300 electrodes/box)	Pediatric/neonatal ECG monitoring: IntelliVue	•	•
989803100581	13955C	Disposable, repositionable solid gel electrode, snap 3 electrodes mounted on plastic card Shelf life: 6 months, dimensions: 22 x 22 mm (0.87 x 0.87 in)	3 electrodes/pouch 100 pouches/box (300 electrodes/box)		•	•



989803100491
13951C



989803100581
13955C

Electrodes

Single-patient use infant/pediatric metallic lead wire electrodes – AAMI color coding

Ordering code	Alternative ordering code	Description	Packaging	Use with	Europe USA
989803100501	13952A	Pre-attached metallic 46 cm (18 in) lead wire electrode, non-shielded, solid gel, AAMI Shelf life: 6 months, dimensions: 22 x 33 mm (0.87 x 1.30 in); socket size 1.5 mm (0.06 in)	3 sets/pouch 100 pouches/box (300 sets/box)	MP2: 865040; MP5: 865024; MMS: 862392, 862442; X2: 865039; X3: 867030; MX100: 867033; 3-ch ECG module: 989803110391, 862275; 3-ch ECG/respiration module: M1002A, 862276; VM3: 863077; VM4: 863063; VM6: 863064, 863065; VM8: 863066, 863068	•
989803100541	13953A	Pre-attached metallic 46 cm (18 in) lead wire electrode, non-shielded, solid gel, AAMI Shelf life: 6 months, dimensions: 22 x 22 mm (0.87 x 0.87 in); socket size 1.5 mm (0.06 in)	3 sets/pouch 100 pouches/box (300 sets/box)		•
989803183081		Mini NeoLead, metallic, pre-attached 61 cm (24 in) lead wire pediatric/neonatal ECG electrodes, hydrogel/hydrocolloid adhesive, AAMI, standard DIN connector Diameter: 19 mm (0.75 in)	3 sets/pouch 50 pouches/box (150 sets/box)	MP2: 865040; MP5: 865024; MMS: 862392, 862442; X2: 865039; X3: 867030; MX100: 867033; 3-ch ECG module: 862275; 3-ch ECG/respiration module: 862276; VM6: 863064, 863065; VM8: 863066, 863068; XPER Flex Cardio: 860335, 860338; Requires ECG trunk cable: M1668A or 989803170181	•
989803183101		NeoLead, metallic, pre-attached 61 cm (24 in) lead wire pediatric/neonatal ECG electrodes, hydrogel/hydrocolloid adhesive, AAMI, standard DIN connector Diameter: 25 mm (1 in)	3 sets/pouch 50 pouches/box (150 sets/box)		•



989803100501
13952A



989803100541
13953A



989803183081



989803183101

Electrodes

Single-patient use infant/pediatric radiolucent lead wire electrodes – AAMI color coding

Ordering code	Alternative ordering code	Description	Packaging	Use with	Europe USA
989803100511	13952B	Pre-attached radiolucent 46 cm (18 in) 3-lead wire electrode, non-shielded, solid gel Shelf life: 6 months, dimensions: 22 x 33 mm (0.87 x 1.30 in); socket size: 1.5 mm (0.06 in)	3 sets/pouch 100 pouches/box (300 sets/box)	MP2: 865040; MP5: 865024; MMS: 862392, 862442; X2: 865039; X3: 867030; MX100: 867033; 3-ch ECG module: 989803110391, 862275; 3-ch ECG/respiration module: M1002A, 862276; VM3: 863077; VM4: 863063; VM6: 863064, 863065; VM8: 863066, 863068	•
989803100551	13953B	Pre-attached radiolucent 46 cm (18 in) 3-lead wire electrode, non-shielded, solid gel Shelf life: 6 months, dimensions: 22 x 22 mm (0.87 x 0.87 in); socket size: 1.5 mm (0.06 in)	3 sets/pouch 100 pouches/box (300 sets/box)		•
989803183121		NeoLead, radiolucent pre-attached 61 cm (24 in) lead wire pediatric/neonatal ECG electrodes, AAMI, standard DIN connector Diameter: 25 mm (1 in)	3 sets/pouch 50 pouches/box (150 sets/box)	MP2: 865040; MP5: 865024; MMS: 862392, 862442; X2: 865039; X3: 867030; MX100: 867033; 3-ch ECG module: 862275; 3-ch ECG/respiration module: 862276; VM6: 863064, 863065; VM8: 863066, 863068; XPER Flex Cardio: 860335, 860338; Requires ECG trunk cable: M1668A or 989803170181	•
989803183141		Micro NeoLead, radiolucent pre-attached 61 cm (24 in) lead wire pediatric/neonatal ECG electrodes, AAMI, standard DIN connector Dimensions: 25 x 9.5 mm (1 x 0.37 in)	3 sets/pouch 50 pouches/box (150 sets/box)		•



989803100511
13952B



989803100551
13953B



989803183121



989803183141

Electrodes

Single-patient use infant/pediatric metallic lead wire electrodes – IEC color coding

Ordering code	Alternative ordering code	Description	Packaging	Use with	Europe	USA
989803100521	13952D	Pre-attached metallic 46 cm (18 in) 3-lead wire electrode, non-shielded, solid gel Shelf life: 6 months, dimensions: 22 x 33 mm (0.87 x 1.30 in); socket size: 1.5 mm (0.06 in)	3 sets/pouch 100 pouches/box (300 sets/box)	MP2: 865040; MP5: 865024; MMS: 862392, 862442; X2: 865039; X3: 867030; MX100: 867033; 3-ch ECG module: 989803110391, 862275; 3-ch ECG/respiration module: M1002A, 862276; VM3: 863077; VM4: 863063; VM6: 863064, 863065; VM8: 863066, 863068. Requires ECG trunk cable: M1668A or 989803170181	•	•
989803100561	13953D	Pre-attached metallic 46 cm (18 in) 3-lead wire electrode, non-shielded, solid gel Shelf life: 6 months, dimensions: 22 x 22 mm (0.87 x 0.87 in); socket size: 1.5 mm (0.06 in)	3 sets/pouch 100 pouches/box (300 sets/box)		•	•



989803100521
13952D



989803100561
13953D

Electrodes

Single-patient use infant/pediatric radiolucent lead wire electrodes – IEC color coding

Ordering code	Alternative ordering code	Description	Packaging	Use with	Europe USA
989803100571	13953E	Pre-attached radiolucent 46 cm (18 in) 3-lead wire electrode, non-shielded, solid gel Shelf life: 6 months, dimensions: 22 x 22 mm (0.87 x 0.87 in); socket size: 1.5 mm (0.06 in)	3 sets/pouch 100 pouches/box (300 sets/box)	MP2: 865040; MP5: 865024; MMS: 862392, 862442; X2: 865039; X3: 867030; MX100: 867033; 3-ch ECG module: 989803110391, 862275; 3-ch ECG/respiration module: M1002A, 862276; VM3: 863077; VM4: 863063; VM6: 863064, 863065; VM8: 863066, 863068	• •



989803100571
13953E



Cables and leads

Lead sets – AAMI color coding

Ordering code	Alternative ordering code	Description	Packaging	Use with	Europe	USA
989803125841	M1968A	ICU, grabber, 5 limb leads, reusable Length: limb 1 m (3.3 ft), chest 1.6 m (5.3 ft)	1 each	MP2: 865040; MP5: 865024; MMS: 862392, 862442; X2: 865039; X3: 867030; MX100: 867033; CM10: 863301, 863365; CM12: 863303, 863366; CM100: 863300; CM120: 863302; CM150: 863304	•	•
989803125861	M1973A	OR, grabber, 5 limb leads, reusable Length: limb 1 m (3.3 ft), chest 1.6 m (5.3 ft)	1 each	MP2: 865040; MP5: 865024; MMS: 862392, 862442; X2: 865039; X3: 867030; MX100: 867033; CM12: 863303, 863366; CM100: 863300; CM120: 863302; CM150: 863304	•	•
989803125881	M1976A	ICU, grabber, 5 chest leads, reusable Length: 1 m (3.3 ft)	1 each	MP2: 865040; MP5: 865024; MMS: 862392, 862442; X2: 865039; X3: 867030; MX100: 867033; CM12: 863303, 863366; CM120: 863302; CM150: 863304	•	•
989803125901	M1979A	OR, grabber, 5 chest leads, reusable Length: 1 m (3.3 ft)	1 each	MP2: 865040; MP5: 865024; MMS: 862392, 862442; X2: 865039; X3: 867030; MX100: 867033; CM12: 863303, 863366; CM120: 863302; CM150: 863304. 5+5 trunk cable M1949A, M1663A	•	•
989803144841	M1532A	ICU, grabber, 4 leads, length: 1 m (3.3 ft)	1 each	MP2: 865040; MP5: 865024; MMS: 862392, 862442; X2: 865039; X3: 867030; MX100: 867033; 6+4 trunk cable M1665A		•
989803144911	M1602A	ICU, snap, 5 chest leads, reusable Length: 1 m (3.3 ft)	1 each	MP2: 865040; MP5: 865024; MMS: 862392, 862442; X2: 865039; X3: 867030; MX100: 867033; CM12: 863303, 863366; CM120: 863302; CM150: 863304. 5+5 trunk cable M1949A, M1663A	•	•
989803144941	M1624A	Miniclip, grabber, unshielded, 3 leads, length: 70 cm (28 in)	1 each	MP2: 865040; MP5: 865024; MMS: 862392, 862442; X2: 865039; X3: 867030; MX100: 867033; CM10: 863301, 863365; CM12: 863303, 863366; CM100: 863300; CM120: 863302; CM150: 863304	•	•
989803144991	M1644A	ICU, snap, 5 limb leads, reusable Length: limb 1 m (3.3 ft), chest 1.6 m (5.3 ft)	1 each	MP2: 865040; MP5: 865024; MMS: 862392, 862442; X2: 865039; X3: 867030; MX100: 867033; CM10: 863301, 863365; CM12: 863303, 863366; CM100: 863300; CM120: 863302; CM150: 863304	•	•
989803145011	M1647A	Miniclip grabber, unshielded, 5 limb leads	1 each	MP2: 865040; MP5: 865024; MMS: 862392, 862442; X2: 865039; X3: 867030; MX100: 867033; CM10: 863301, 863365; CM12: 863303, 863366; CM100: 863300; CM120: 863302; CM150: 863304	•	•
989803145091	M1671A	ICU, grabber, 3 leads, length: 1 m (3.3 ft)	1 each	MP2: 865040; MP5: 865024; MMS: 862392, 862442; X2: 865039; X3: 867030; MX100: 867033; CM10: 863301, 863365; CM12: 863303, 863366; CM100: 863300; CM120: 863302; CM150: 863304	•	•
989803145111	M1673A	ICU, snap, 3 leads, length: 1 m (3.3 ft)	1 each	MP2: 865040; MP5: 865024; MMS: 862392, 862442; X2: 865039; X3: 867030; MX100: 867033; CM10: 863301, 863365; CM12: 863303, 863366; CM100: 863300; CM120: 863302; CM150: 863304	•	•
989803145131	M1675A	OR, grabber, 3 leads, length: 1 m (3.3 ft)	1 each	MP2: 865040; MP5: 865024; MMS: 862392, 862442; X2: 865039; X3: 867030; MX100: 867033; CM10: 863301, 863365; CM12: 863303, 863366; CM100: 863300; CM120: 863302; CM150: 863304	•	•
989803145161	M1680A	ICU, grabber, 6 leads, reusable Length: limb 1 m (3.3 ft), chest 1.6 m (5.3 ft)	1 each	MP2: 865040; MP5: 865024; MMS: 862392, 862442; X2: 865039; X3: 867030; MX100: 867033; 6-lead trunk cable M1667A or 6+4 trunk cable M1665A	•	

Cables and leads

Lead sets – AAMI color coding

Ordering code	Alternative ordering code	Description	Packaging	Use with	Europe USA
989803145181	M1682A	ICU, snap, 6 leads, reusable Length: limb 1 m (3.3 ft), chest 1.6 m (5.3 ft)	1 each	MP2: 865040; MP5: 865024; MMS: 862392, 862442; X2: 865039; X3: 867030; MX100: 867033; 6-lead trunk cable M1667A or 6+4 trunk cable M1665A	•
989803173121		ICU, grabber, 3 leads, length: 1 m (3.3 ft)	20 each	MP2: 865040; MP5: 865024; MMS: 862392, 862442; X2: 865039; X3: 867030; MX100: 867033	• •
989803173131		ICU, grabber, 5 limb leads, single-patient use Length: 1 m (3.3 ft)	20 each	MP2: 865040; MP5: 865024; MMS: 862392, 862442; X2: 865039; X3: 867030; MX100: 867033	• •
989803184931		Standard 10-lead patient cable, AHA Length: 1 m (3.3 ft)	1 each	MP2: 865040; MP5: 865024; MMS: 862392, 862442; X2: 865039; X3: 867030; MX100: 867033	•
989803192141		ICU, grabber, 5 chest leads, single-patient use Length: 1 m (3.3 ft)	20 each	MP2: 865040; MP5: 865024; MMS: 862392, 862442; X2: 865039; X3: 867030; MX100: 867033; 5+5 trunk cable M1949A, M1663A	• •
989803197511		6-lead set, single-patient use, bedside, AAMI Length: 1 m (3.3 ft)	20 each	MP2: 865040; MP5: 865024; MMS: 862392, 862442; X2: 865039; X3: 867030; MX100: 867033	•



989803125841
M1968A



989803125861
M1973A



989803125881
M1976A



989803125901
M1979A



989803144841
M1532A



989803144911
M1602A



989803144941
M1624A



989803144991
M1644A



989803145011
M1647A



989803145091
M1671A



989803145111
M1673A



989803145131
M1675A



989803145161
M1680A



989803145181
M1682A



989803173121



989803173131



989803192141



989803197511

Cables and leads

Lead sets – IEC color coding

Ordering code	Alternative ordering code	Description	Packaging	Use with	Europe	USA
989803125851	M1971A	ICU, grabber, 5 limb leads, reusable Length: limb 1 m (3.3 ft), chest 1.6 m (5.3 ft)	1 each	MP2: 865040; MP5: 865024; MMS: 862392, 862442; X2: 865039; X3: 867030; MX100: 867033; CM10: 863301, 863365; CM12: 863303, 863366; CM100: 863300; CM120: 863302; CM150: 863304. 5-lead trunk cable M1668A, OR trunk cable 989803170181 or 5+5 trunk cable M1949A, M1663A	•	•
989803125871	M1974A	OR, grabber, 5 limb leads, reusable Length: limb 1 m (3.3 ft), chest 1.6 m (5.3 ft)	1 each	MP2: 865040; MP5: 865024; MMS: 862392, 862442; X2: 865039; X3: 867030; MX100: 867033; CM10: 863301, 863365; CM12: 863303, 863366; CM100: 863300; CM120: 863302; CM150: 863304. 5-lead trunk cable M1668A, OR trunk cable 989803170181 or 5+5 trunk cable M1949A, M1663A	•	•
989803125891	M1978A	ICU, grabber, 5 chest leads, reusable Length: 1 m (3.3 ft)	1 each	MP2: 865040; MP5: 865024; MMS: 862392, 862442; X2: 865039; X3: 867030; MX100: 867033; CM10: 863301, 863365; CM12: 863303, 863366; CM100: 863300; CM120: 863302; CM150: 863304. 5+5 trunk cable M1949A, M1663A	•	•
989803125911	M1984A	OR, grabber, 5 chest leads, reusable Length: 1 m (3.3 ft)	1 each	MP2: 865040; MP5: 865024; MMS: 862392, 862442; X2: 865039; X3: 867030; MX100: 867033; CM12: 863303, 863366; CM120: 863302; CM150: 863304. 5+5 trunk cable M1949A, M1663A	•	•
989803144851	M1533A	ICU, grabber, 4 chest leads, reusable Length: 1 m (3.3 ft)	1 each	MP2: 865040; MP5: 865024; MMS: 862392, 862442; X2: 865039; X3: 867030; MX100: 867033; 6-lead trunk cable M1667A or 6+4 trunk cable M1665A	•	•
989803144921	M1604A	ICU, snap, 5 chest leads, reusable Length: 1 m (3.3 ft)	1 each	MP2: 865040; MP5: 865024; MMS: 862392, 862442; X2: 865039; X3: 867030; MX100: 867033; CM10: 863301, 863365; CM12: 863303, 863366; CM100: 863300; CM120: 863302; CM150: 863304. 5+5 trunk cable M1949A, M1663A	•	•
989803144951	M1626A	Miniclip, grabber, unshielded, 3 leads, reusable Length: 70 cm (28 in)	1 each	MP2: 865040; MP5: 865024; MMS: 862392, 862442; X2: 865039; X3: 867030; MX100: 867033; CM10: 863301, 863365; CM12: 863303, 863366; CM100: 863300; CM120: 863302; CM150: 863304	•	•

Cables and leads

Lead sets – IEC color coding

Ordering code	Alternative ordering code	Description	Packaging	Use with	Europe	USA
989803145001	M1645A	ICU, snap, 5 limb leads, reusable Length: limb 1 m (3.3 ft), chest 1.6 m (5.3 ft)	1 each	MP2: 865040; MP5: 865024; MMS: 862392, 862442; X2: 865039; X3: 867030; MX100: 867033; CM10: 863301, 863365; CM12: 863303, 863366; CM100: 863300; CM120: 863302; CM150: 863304. 5-lead trunk cable M1668A, OR trunk cable 989803170181 or 5+5 trunk cable M1949A, M1663A	•	•
989803145021	M1648A	Miniclip grabber, unshielded, 5 limb leads, reusable Length: limb 70 cm (28 in), chest 1.3 m (2.3 ft)	1 each	MP2: 865040; MP5: 865024; MMS: 862392, 862442; X2: 865039; X3: 867030; MX100: 867033; CM10: 863301, 863365; CM12: 863303, 863366; CM100: 863300; CM120: 863302; CM150: 863304. 5-lead trunk cable M1668A, OR trunk cable 989803170181 or 5+5 trunk cable M1949A, M1663A	•	•
989803145101	M1672A	ICU, grabber, 3 leads, reusable Length: 1 m (3.3 ft)	1 each	MP2: 865040; MP5: 865024; MMS: 862392, 862442; X2: 865039; X3: 867030; MX100: 867033; CM10: 863301, 863365; CM12: 863303, 863366; CM100: 863300; CM120: 863302; CM150: 863304	•	•
989803145121	M1674A	ICU, snap, 3 leads, reusable Length: 1 m (3.3 ft)	1 each	MP2: 865040; MP5: 865024; MMS: 862392, 862442; X2: 865039; X3: 867030; MX100: 867033; CM10: 863301, 863365; CM12: 863303, 863366; CM100: 863300; CM120: 863302; CM150: 863304	•	•
989803145141	M1678A	OR, grabber, 3 leads, reusable Length: 1 m (3.3 ft)	1 each	MP2: 865040; MP5: 865024; MMS: 862392, 862442; X2: 865039; X3: 867030; MX100: 867033; CM10: 863301, 863365; CM12: 863303, 863366; CM100: 863300; CM120: 863302; CM150: 863304	•	•
989803145171	M1681A	ICU, grabber, 6 leads, reusable Length: limb 1 m (3.3 ft), chest 1.6 m (5.3 ft)	1 each	MP2: 865040; MP5: 865024; MMS: 862392, 862442; X2: 865039; X3: 867030; MX100: 867033; 6-lead trunk cable M1667A or 6+4 trunk cable M1665A	•	•
989803174201		ICU, grabber, 3 leads, single-patient use Length: 1 m (3.3 ft)	20 each	MP2: 865040; MP5: 865024; MMS: 862392, 862442; X2: 865039; X3: 867030; MX100: 867033; CM10: 863301, 863365; CM12: 863303, 863366; CM100: 863300; CM120: 863302; CM150: 863304	•	
989803174211		ICU, grabber, 5 limb leads, single-patient use Length: 1 m (3.3 ft)	20 each	MP2: 865040; MP5: 865024; MMS: 862392, 862442; X2: 865039; X3: 867030; MX100: 867033; CM10: 863301, 863365; CM12: 863303, 863366; CM100: 863300; CM120: 863302; CM150: 863304. 5-lead trunk cable M1668A, OR trunk cable 989803170181 or 5+5 trunk cable M1949A, M1663A	•	•
989803192151		ICU, grabber, 5 chest leads, single-patient use Length: 1 m (3.3 ft)	20 each	MP2: 865040; MP5: 865024; MMS: 862392, 862442; X2: 865039; X3: 867030; MX100: 867033; 5+5 trunk cable M1949A, M1663A	•	•



989803125851
M1971A



989803125871
M1974A



989803125891
M1978A



989803125911
M1984A



989803144851
M1533A



989803144921
M1604A



989803144951
M1626A



989803145001
M1645A



989803145021
M1648A



989803145101
M1672A



989803145121
M1674A



989803145141
M1678A



989803145171
M1681A



989803174201



989803174211

Cables and leads

IntelliVue cable family – leads accessories

Ordering code	Alternative ordering code	Description	Packaging	Use with	Europe	USA
989803148841		IntelliVue cable management kit	5 organizers	All cables	•	•
989803193821		Clear tab/snap DIN adapter	10 adapters	All DIN to tab lead sets	•	•



989803148841



989803193821

Cables and leads

One piece trunk/leadset cables

Ordering code	Alternative ordering code	Description	Packaging	Use with	Europe	USA
989803143171		3-lead grabber, IEC, reusable Length: 2.5 m (8.2 ft)	1 cable	VM6: 863064, 863065, 863086; VM8: 863066, 863068, 863087, 863088, 863317; MMS: 862442, 866462; X2: 865039; MP2: 865040; MP5: 865024; CM10: 863301, 863320; CM12: 863303, 863366; CM100: 863300; CM120: 863302, 863321; CM150: 863304, 863322	•	•
989803143181		3-lead grabber, AAMI, reusable Length: 2.5 m (8.2 ft)	1 cable			•
989803143191		5-lead grabber, IEC, reusable Length: 2.5 m (8.2 ft)	1 cable		•	•
989803143201		6-lead grabber, AAMI, reusable Length: 2.5 m (8.2 ft)	1 cable			•



989803143171



989803143181



989803143191



989803143201

Cables and leads

IntelliVue Telemetry System lead sets – AAMI color coding

Ordering code	Alternative ordering code	Description	Packaging	Use with	Europe USA
989803173141		Grabber and shower shield, 3 leads, single-patient use, length: 85 cm (34 in)	20 each	TRx4851A: 862231; TRx4841A: 862439	•
989803173151		Grabber and shower shield, 5 leads, single-patient use, length: 85 cm (34 in)	20 each		•



989803173141



989803173151

Cables and leads

IntelliVue Telemetry System shields and alignment guides

Ordering code	Alternative ordering code	Description	Packaging	Use with	Europe	USA
989803143481		Tether cable, connects PWD to TeleMon tether cable or MP5 tether cable, reusable, length: 51 cm (20 in)	1 cable	TRx4851A: 862231; TRx4841A: 862439; MP5: 865024	•	•
989803146911		MP5 tether cable, connects the MP5 to the PWD tether cable, reusable, length: 2.0 m (79 in)	1 cable		•	•



989803143481



989803146911

Miscellaneous MX40 cables/supplies

Ordering code	Alternative ordering code	Description	Packaging	Use with	Europe	USA
989803172221		Patient monitor ECG trunk cable, AAMI/IEC, reusable, length: 2.7 m (9 ft)	1 each	MX40: 865350, 865351, 865352	•	•



989803172221

Cables and leads

Efficia 3-lead sets

Ordering code	Alternative ordering code	Description	Packaging	Use with	Europe USA
989803160651		Efficia 3-lead grabber, AAMI	1 each	CM10: 863301, 863365; CM12: 863303, 863366;	•
989803160661		Efficia 3-lead grabber, IEC	1 each	CM100: 863300, 863320; CM120: 863302, 863321; CM150: 863304, 863322	•

Efficia 5-lead sets

Ordering code	Alternative ordering code	Description	Packaging	Use with	Europe USA
989803160691		Efficia 5-lead grabber, limb, AAMI	1 each	CM10: 863301, 863365; CM12: 863303, 863366;	•
989803160701		Efficia 5-lead grabber, limb, IEC	1 each	CM100: 863300, 863320; CM120: 863302, 863321; CM150: 863304, 863322	•

Cables and leads

Patient cables – AAMI color coding

Ordering code	Alternative ordering code	Description	Packaging	Use with	Europe	USA
989803171801		ECG, 3 leads, grabbers, reusable, length: 85 cm (34 in)	1 each	MX40: 865350, 865351, 865352	•	•
989803171811		ECG + SpO ₂ , 3 leads, grabbers, reusable, length: 85 cm (34 in)	1 each		•	•
989803171821		ECG, 5 leads, snaps, reusable, length: 85 cm (34 in)	1 each		•	•
989803171831		ECG, 5 leads, grabbers, reusable, length: 85 cm (34 in)	1 each		•	•
989803171841		ECG + SpO ₂ , 5 leads, snaps, reusable, length: 85 cm (34 in)	1 each		•	•
989803171851		ECG + SpO ₂ , 5 leads, grabbers, reusable, length: 85 cm (34 in)	1 each		•	•
989803171861		ECG, 6 leads, grabbers, reusable, length: 85 cm (34 in)	1 each		•	•
989803171871		ECG + SpO ₂ , 6 leads, grabbers, reusable, length: 85 cm (34 in)	1 each		•	•
989803172031		ECG, 5 leads, grabbers, single-patient use, length 85 cm (34 in)	20 each		•	•
989803172051		ECG + SpO ₂ , 5 leads, grabbers, single-patient use, length: 85 cm (34 in)	20 each		•	•
989803202411		ECG 5 leads, grabber AAMI, Masimo SpO ₂ , telemetry Length: 85 cm (34 in)	1 each		•	•



989803171801



989803171811



989803171821



989803171831



989803171841



989803171851



989803171861



989803171871



989803172031



989803172051



989803202411

Cables and leads

Patient cables – IEC color coding

Ordering code	Alternative ordering code	Description	Packaging	Use with	Europe	USA
989803171901		ECG, 3 leads, grabbers, reusable, length: 85 cm (34 in)	1 each	MX40: 865350, 865351, 865352	•	•
989803171911		ECG + SpO ₂ , 3 leads, grabbers, reusable, length: 85 cm (34 in)	1 each		•	•
989803171931		ECG, 5 leads, grabbers, reusable, length: 85 cm (34 in)	1 each		•	•
989803171951		ECG + SpO ₂ , 5 leads, grabbers, reusable, length: 85 cm (34 in)	1 each		•	•
989803171961		ECG, 6 leads, grabbers, reusable, length: 85 cm (34 in)	1 each		•	•
989803171971		ECG + SpO ₂ , grabbers, reusable, length: 85 cm (34 in)	1 each		•	•
989803172131		ECG, 5 leads, grabbers, single-patient use, length: 85 cm (34 in)	20 each		•	•
989803172151		ECG + SpO ₂ , 5 leads, grabbers, single-patient use, length: 85 cm (34 in)	20 each		•	•
989803202421		ECG 5 leads, grabber, IEC, Masimo SpO ₂ , telemetry length: 85 cm (34 in)	1 each		•	•



989803171901



989803171911



989803171931



989803171951



989803171961



989803171971



989803172131



989803172151

Cables and leads

Trunk cables

Ordering code	Alternative ordering code	Description	Packaging	Use with	Europe	USA
989803125831	M1949A	ECG trunk cable, 12-pin connector, AAMI and IEC labels included 10 (5+5) leads, reusable Length: 2.7 m (9.9 ft)	1 cable	MP2: 865040; MP5: 865024; MMS: 862442; X2: 865039; X3: 867030; MX100: 867033; CM12: 863303, 863366; CM120: 863302, 863321; CM150: 863304, 863322; HeartStart XL: 861266; HeartStart XL+: 861290; HeartStart MRx: 861288, 861289; Xper Flex Cardio: 860338, 850335	•	•
989803144791	M1663A	ECG trunk cable, 12-pin connector, AAMI and IEC labels included 10 (5+5) leads, reusable Length: 2 m (6.5 ft)	1 cable	MP2: 865040; MP5: 865024; MMS: 862392, 862442; X2: 865039; X3: 867030; MX100: 867033; 3 Ch ECG module: 862275; 3 ECG ch./respiration module: 862276; CM120: 863302, 863321; CM150: 863304, 863322; HeartStart XL: 861266; HeartStart XL+: 861290; HeartStart MRx: 861288	•	•
989803145041	M1665A	ECG trunk cable, 12-pin connector, AAMI and IEC labels included 10 (6+4) leads, reusable Length: 2.7 m (9.9 ft)	1 cable	MP2: 865040; MP5: 865024; MMS: 862442; X2: 865039; X3: 867030; MX100: 867033	•	•
989803145051	M1667A	ECG trunk cable, 12-pin connector, AAMI and IEC labels included 6 leads, reusable Length: 2.7 m (9.9 ft)	1 cable	MP2: 865040; MP5: 865024; MMS: 862392, 862442; X2: 865039; X3: 867030; MX100: 867033; HeartStart XL+: 861290	•	•
989803145061	M1668A	ECG trunk cable, 12-pin connector, AAMI and IEC labels included 5 leads, reusable Length: 2.7 m (9.9 ft)	1 cable	MP2: 865040; MP5: 865024; MMS: 862392, 862442; X2: 865039; X3: 867030; MX100: 867033; 3-ch ECG module: 862275; 3-ch ECG/respiration module: 862276; VM6: 863064, 863065, 863086; VM8: 863066, 863068, 863087, 863088, 863317; CM10: 863301, 863365; CM12: 863303, 863366; CM100: 863300, 863320; CM120: 863302, 863321; CM150: 863304, 863322; DFM100: 866199; HeartStart XL: 861266; HeartStart XL+: 861290; HeartStart MRx: 861288, 861289; Xper Flex Cardio: 860338, 850335	•	•

Cables and leads

Trunk cables

Ordering code	Alternative ordering code	Description	Packaging	Use with	Europe	USA
989803145071	M1669A	ECG trunk cable, 12-pin connector, AAMI and IEC labels included 3 leads, reusable Length: 2.7 m (9.9 ft)	1 cable	MP2: 865040; MP5: 865024; MMS: 862392, 862442; X2: 865039; X3: 867030; MX100: 867033; 3-ch ECG module: 862275; 3-ch ECG/respiration module: 862276; VM3: 863077; VM4: 863063, 863085; VM6: 863064, 863065, 863086; VM8: 863066, 863068, 863087, 863088, 863317; CM10: 863301, 863365; CM12: 863303, 863366; CM100: 863300, 863320; CM120: 863302, 863321; CM150: 863304, 863322; DFM100: 866199; HeartStart XL: 861266; HeartStart XL+: 861290; HeartStart MRx: 861288, 861289	•	•
989803170171		ECG trunk cable, orange, 12-pin connector, AAMI and IEC labels included For use in operating room 3 leads, reusable Length: 2.7 m (9.9 ft)	1 cable	MP2: 865040; MP5: 865024; MMS: 862392, 862442; X2: 865039; X3: 867030; MX100: 867033; VM6: 863064, 863065; VM8: 863066, 863068, 863317; CM10: 863301, 863365; CM12: 863303, 863366; CM100: 863300; CM120: 863302; CM150: 863304; DFM100: 866199	•	•
989803170181		ECG trunk cable, orange, 12-pin connector, AAMI and IEC labels included For use in operating room 5 leads, reusable Length: 2.7 m (9.9 ft)	1 cable	MP2: 865040; MP5: 865024; MMS: 862442; X2: 865039; X3: 867030; MX100: 867033; VM6: 863065; VM8: 863066, 863068, 863317; CM10: 863301, 863365; CM12: 863303, 863366; CM100: 863300, 863320; CM120: 863302, 863321; CM150: 863304, 863322; DFM100: 866199	•	•



989803125831
M1949A



989803144791
M1663A



989803145041
M1665A



989803145051
M1667A



989803145061
M1668A



989803145071
M1669A



989803170171



989803170181



EE M4575B
27.5 - 36.0 cm

Cables and leads

Trunk cable adapter for non-Philips monitors (connects non-Philips trunk cables to IntelliVue lead sets)

Ordering code	Alternative ordering code	Description	Packaging	Use with	Europe USA
989803174501		ECG trunk cable adapter – GE, AAMI/IEC 5 leads (can also be used for 3-lead ECG), reusable	1 adapter	Connects to GE 5-lead monitoring trunk cables with MultiLink-style connectors (such as product numbers 41-2931-XXX, 411910-0011)	•
989803174511		ECG trunk cable adapter – Spacelabs, AAMI/IEC 5 leads (can also be used for 3-lead ECG), reusable	1 adapter	Connects to Spacelabs 5-lead monitoring trunk cables with TruLink-style connectors (such as Spacelabs 700-0008-06 shielded trunk)	•
989803174521		ECG trunk cable adapter – Datascope, AAMI 5 leads (can also be used for 3-lead ECG), reusable	1 adapter	Connects to Datascope 5-lead monitoring AAMI trunk cables with DIN-style connector (0012-00-0620-02)	•
989803174531		ECG trunk cable adapter – Mindray, AAMI/IEC 5 leads (can also be used for 3-lead ECG), reusable	1 adapter	Connects to Mindray 5-lead monitoring trunk cables (such as 0012-00-1255-02)	•
989803177881		ECG trunk cable adapter – Datascope, IEC 5 leads (can also be used for 3-lead ECG), reusable	1 adapter	Connects to Datascope 5-lead monitoring IEC trunk cables with DIN-style connector	•
989803182171		ECG trunk cable adapter – Draeger/Fukuda Denshi, AAMI/IEC 5 leads (can also be used for 3-lead ECG), reusable	1 adapter	Connects Philips 3- and 5-lead leadsets to Draeger monitoring trunk cables (such as 3368391, 5950196, 5191221)	•
989803182181		ECG trunk cable adapter – Nihon Kohden, AAMI /IEC 5 leads (can also be used for 3-lead ECG), reusable	1 adapter	Connects any Philips 3- and 5-lead leadsets to Nihon Kohden monitoring trunk cables (such as JC-906P)	•



989803174501



989803174511



989803174521



989803174531



989803177881



989803182171



989803182181

Telemetry adapters

ECG telemetry adapters

Ordering code	Alternative ordering code	Description	Packaging	Use with	Europe	USA
989803199071		MX40 telemetry adapter, ECG + SpO ₂ , 6 leads	1 each	MX40: 865350, 865351, 865352	•	•
989803199081		MX40 telemetry adapter, SpO ₂ only	1 each		•	•
989803199091		MX40 telemetry adapter, ECG + SpO ₂ , 5 leads	1 each		•	•
989803199101		MX40 telemetry adapter, ECG + SpO ₂ , 3 leads	1 each		•	•
989803202381		MX40 Adapter 5-lead + Masimo SpO ₂	1 each		•	•
989803202391		MX40 Adapter Masimo SpO ₂ -only	1 each		•	•
989803204291		MX40 Adapter 6-lead + Masimo SpO ₂	1 each		•	•



989803199071



989803199081



989803199091



989803199101



989803202381



989803202391

EEG

EEG supplies

Ordering code	Alternative ordering code	Description	Packaging	Use with	Europe	USA
989803105621	M1931A	5-lead EEG adult cup electrode set, reusable, length: 80 cm (31.5 in)	5 leads	EEG module: 862290, 866078	•	•
989803105631	M1932A	5-lead EEG pediatric cup electrode set, reusable, length: 80 cm (31.5 in)	5 leads		•	•
989803105641	M1934A	5-lead EEG miniclip lead set, reusable, length: 80 cm (31.5 in)	5 leads		•	•
989803106091	M2268A	5-lead trunk cable, reusable, length: 2.7 m (8.8 ft)	1 cable	EEG module: 862290, 866078	•	•
989803180521		9-lead EEG infant and pediatric cup electrode set, reusable, length: 80 cm (31.5 in)	9 leads		•	•
989803180531		9-lead EEG miniclip lead set, reusable, length: 80 cm (31.5 in)	9 leads		•	•
989803180541		4-channel trunk cable, reusable, length: 2.7 m (8.8 ft)	1 cable		•	•
989803180561		9-lead EEG adult cup electrode set, reusable, length: 80 cm (31.5 in)	9 leads		•	•



989803105621
M1931A



989803105631
M1932A



989803105641
M1934A



989803106091
M2268A



989803180521



989803180531



989803180541



989803180561

Electrodes

Single-patient use pediatric EEG monitoring electrodes

Ordering code	Alternative ordering code	Description	Packaging	Use with	Europe USA
989803100491	13951C	Disposable, repositionable solid gel electrode, snap 3 electrodes mounted on plastic card Shelf life: 6 months, dimensions: 22 x 33 mm (0.87 x 1.30 in)	3 electrodes/pouch 100 pouches/box (300 electrodes/box)	EEG module: 862290	• •
989803100581	13955C	Disposable, repositionable solid gel electrode, snap 3 electrodes mounted on plastic card Shelf life: 6 months, dimensions: 22 x 22 mm (0.87 x 0.87 in)	3 electrodes/pouch 100 pouches/box (300 electrodes/box)		• •



989803100491
13951C



989803100581
13955C

NMT

IntelliVue NMT patient cable

Ordering code	Alternative ordering code	Description	Packaging	Use with	Europe	USA
989803174581		Patient cable with 12-pin instrument connector, reusable, length: 3.0 m (9.8 ft)	1 each	NMT module: 865383	•	•
989803199211		IntelliVue NMT hand adapter	10 pieces/box		•	•



989803174581



989803199211



PHILIPS

Single Care
Small Adult

REF: 090800 182291

20.5 - 28.5 cm

Non-invasive blood pressure

Multi-patient cuffs

Comfort Care cuffs – single hose

Ordering code	Alternative ordering code	Description	Packaging	Use with	Europe USA
989803104141	M1571A	Comfort Care cuff, infant Bladder length: 15 cm (5.9 in) Bladder width: 5.5 cm (2.2 in) Limb circumference: 10–15 cm (3.9–5.9 in)	1 cuff	NBP module: 989803110421, 862278; Series 5000: 862318; Series 50 FM: 862334, 862335; FM20: 862198; FM30: 862199; FM40: 865132; FM50: 865071; Xper Flex Cardio: 860335, 860338; VM4: 863063; VM6: 863064, 863065; VM8: 863066, 863068; VS3: 863069, 863070, 863071, 863072, 863073, 863074; VS2: 863079, 863080, 863081, 863082, 863278, 863279; VS1: 863275, 863276, 863277; VS4: 863283; CM10: 863301, 863365; CM12: 863303, 863366; CM100: 863300; CM120: 863302; CM150: 863304; MP2: 865040; MP5: 865024, 865322, 865120; MMS: 862442; X2: 865039; X3: 867030; MX100: 867033; HeartStart XL+: 861290; HeartStart MRx: 861288, 861493, 861494, 861495, 861289, 861464, 861465, 861480, 861481, 861482, 861483, 861484, 861491, 860396, 860397, 860398	• •
989803104151	M1572A	Comfort Care cuff, pediatric Bladder length: 21.5 cm (8.5 in) Bladder width: 8 cm (3.1 in) Limb circumference: 14–21.5 cm (5.5–8.5 in)	1 cuff		• •
989803104161	M1573A	Comfort Care cuff, small adult Bladder length: 24 cm (9.4 in) Bladder width: 10.5 cm (4.1 in) Limb circumference: 20.5–28 cm (8–11 in)	1 cuff		• •
989803104171	M1574A	Comfort Care cuff, adult Bladder length: 28 cm (11 in) Bladder width: 13 cm (5.1 in) Limb circumference: 27–35 cm (10.6–13.7 in)	1 cuff		• •
989803104181	M1575A	Comfort Care cuff, large adult Bladder length: 35 cm (13.8 in) Bladder width: 16 cm (6.3 in) Limb circumference: 34–43 cm (13.3–16.9 in)	1 cuff		• •



989803104141
M1571A



989803104151
M1572A



989803104161
M1573A



989803104171
M1574A



989803104181
M1575A

Non-invasive blood pressure

Multi-patient cuffs

Comfort Care cuffs – single hose

Ordering code	Alternative ordering code	Description	Packaging	Use with	Europe	USA
989803104191	M1576A	Comfort Care cuff, large adult XL Bladder length: 43 cm (16.9 in) Bladder width: 20 cm (7.9 in) Limb circumference: 42–54 cm (16.5–21.2 in)	1 cuff	NBP module: 989803110421, 862278; Series 5000: 862318; Series 50 FM: 862334, 862335; FM20: 862198; FM30: 862199; FM40: 865132; FM50: 865071; Xper Flex Cardio: 860335, 860338; VM4: 863063; VM6: 863064, 863065; VM8: 863066, 863068; VS3: 863069, 863070, 863071, 863072, 863073, 863074; VS2: 863079, 863080, 863081, 863082, 863278, 863279; VS1: 863275, 863276, 863277; VS4: 863283; CM10: 863301, 863365; CM12: 863303, 863366; CM100: 863300; CM120: 863302; CM150: 863304; MP2: 865040; MP5: 865024, 865322, 865120; MMS: 862442; X2: 865039; X3: 867030; MX100: 867033; HeartStart XL+: 861290; HeartStart MRx: 861288, 861493, 861494, 861495, 861289, 861464, 861465, 861480, 861481, 861482, 861483, 861484, 861491, 860396, 860397, 860398	•	•
989803191311	M1574XL	Comfort Care cuff, adult XL Bladder length: 28 cm (11 in) Bladder width: 13 cm (5.1 in) Limb circumference: 27–35 cm (10.6–13.7 in)	1 cuff		•	•

Non-invasive blood pressure

Multi-patient cuffs

Easy Care cuffs – single hose

Ordering code	Alternative ordering code	Description	Packaging	Use with	Europe	USA
989803147841	M4552B	Infant, orange Bladder length: 15 cm (5.9 in) Bladder width: 5.5 cm (2.2 in) Limb circumference: 10–15 cm (3.9–5.9 in)	1 cuff	NBP module: 862278; MMS: 862442, 866462; MP2: 865040; MP5: 865024, 865322, 865120; X2: 865039; X3: 867030; MX100: 867033; MB1 bundle: 866044; MB2 bundle: 866045; MB3 bundle: 866046; VS1: 863055, 863056, 863057, 863058, 863059, 863060, 863061, 863062; C3: 862474, 862478; VM4: 863063, 863085, 863287; VM6: 863064, 863065, 863086, 863288; VM8: 863066, 863068, 863087, 863088, 863289; VS2: 863079, 863080, 863081, 863082, 863278, 863279; VS3: 863069, 863070, 863071, 863072, 863073, 863074, 863285; VS4: 863283, 863286; VS: 863275, 863276, 863277; CM10: 863301, 863365; CM12: 863303, 863366; CM100: 863300; CM120: 863302; CM150: 863304	•	•
989803147851	M4553B	Pediatric, green Bladder length: 21.5 cm (8.5 in) Bladder width: 8 cm (3.1 in) Limb circumference: 14–21.5 cm (5.5–8.5 in)	1 cuff	CM10: 863301, 863365; CM12: 863303, 863366; CM100: 863300; CM120: 863302; CM150: 863304; NBP module: 862278; MMS: 862442; X2: 865039; MP2: 865040; MP5: 865024, 865120, 865322; MB1 bundle: 866044; MB2 bundle: 866045; MB3 bundle: 866046; C3: 862474, 862478; VM4: 863063, 863085, 863287; VM6: 863064, 863065, 863086, 863288; VM8: 863066, 863068, 863087, 863088, 863289; VS: 863275, 863276, 863277; VS1: 863055, 863056, 863057, 863058, 863059, 863060, 863061, 863062; VS2: 863079, 863080, 863081, 863082, 863278, 863279; VS3: 863069, 863070, 863071, 863072, 863073, 863074, 863285; VS4: 863283, 863286; FM20: 862198; FM30: 862199; FM40: 865132; FM50: 865071; Series 50: 852334, 852335, 852336, 852337	•	•
989803147861	M4554B	Small adult, light blue Bladder length: 24 cm (9.4 in) Bladder width: 10.6 cm (4.2 in) Limb circumference: 20.5–28.5 cm (8–11.2 in)	1 cuff	CM10: 863301, 863365; CM12: 863303, 863366; CM100: 863300; CM120: 863302; CM150: 863304; NBP module: 862278; MMS: 862442; X2: 865039; MP2: 865040; MP5: 865024, 865120, 865322; MB1 bundle: 866044; MB2 bundle: 866045; MB3 bundle: 866046; C3: 862474, 862478; VM4: 863063, 863085, 863287; VM6: 863064, 863065, 863086, 863288; VM8: 863066, 863068, 863087, 863088, 863289; VS: 863275, 863276, 863277; VS1: 863055, 863056, 863057, 863058, 863059, 863060, 863061, 863062; VS2: 863079, 863080, 863081, 863082, 863278, 863279; VS3: 863069, 863070, 863071, 863072, 863073, 863074, 863285; VS4: 863283, 863286; FM20: 862198; FM30: 862199; FM40: 865132; FM50: 865071; Series 50: 852334, 852335, 852336, 852337	•	•
989803147871	M4555B	Adult, navy blue Bladder length: 30 cm (11.8 in) Bladder width: 13.5 cm (5.3 in) Limb circumference: 27.5–36 cm (10.8–14.1 in)	1 cuff	CM10: 863301, 863365; CM12: 863303, 863366; CM100: 863300; CM120: 863302; CM150: 863304; NBP module: 862278; MMS: 862442; X2: 865039; MP2: 865040; MP5: 865024, 865120, 865322; MB1 bundle: 866044; MB2 bundle: 866045; MB3 bundle: 866046; C3: 862474, 862478; VM4: 863063, 863085, 863287; VM6: 863064, 863065, 863086, 863288; VM8: 863066, 863068, 863087, 863088, 863289; VS: 863275, 863276, 863277; VS1: 863055, 863056, 863057, 863058, 863059, 863060, 863061, 863062; VS2: 863079, 863080, 863081, 863082, 863278, 863279; VS3: 863069, 863070, 863071, 863072, 863073, 863074, 863285; VS4: 863283, 863286; FM20: 862198; FM30: 862199; FM40: 865132; FM50: 865071; Series 50: 852334, 852335, 852336, 852337	•	•

Non-invasive blood pressure

Multi-patient cuffs

Easy Care cuffs – single hose

Ordering code	Alternative ordering code	Description	Packaging	Use with	Europe	USA
989803147881	M4556B	Adult extra-long, navy blue Bladder length: 30 cm (11.8 in) Bladder width: 13.5 cm (5.3 in) Limb circumference: 27.5–36 cm (10.8–14.1 in)	1 cuff	CM10: 863301, 863365; CM12: 863303, 863366; CM100: 863300; CM120: 863302; CM150: 863304; NBP module: 862278; MMS: 862392, 862442; X2: 865039; MP2: 865040; MP5: 865024, 865120, 865322; MB1 bundle: 866044;	•	•
989803147891	M4557B	Large adult, burgundy Bladder length: 38 cm (15 in) Bladder width: 17 cm (6.7 in) Limb circumference: 35–45 cm (13.7–17.7 in)	1 cuff	MB2 bundle: 866045; MB3 bundle: 866046; C3: 862474, 862478; VM4: 863063, 863085, 863287; VM6: 863064, 863065, 863086, 863288; VM8: 863066, 863068, 863087, 863088, 863289; VS1: 863055, 863056, 863057, 863058, 863059, 863060, 863061, 863062; VS2: 863079, 863080, 863081, 863082, 863278, 863279; VS3: 863069,	•	•
989803147901	M4558B	Large adult extra-long, burgundy Bladder length: 38 cm (15 in) Bladder width: 17 cm (6.7 in) Limb circumference: 35–45 cm (13.7–17.7 in)	1 cuff	863070, 863071, 863072, 863073, 863074, 863285; VS4: 863283, 863286; VSi: 863275, 863276, 863277; FM20: 862198; FM30: 862199; FM40: 865132; FM50: 865071; Series 50: 852334, 852335, 852336, 852337	•	•
989803147911	M4559B	Thigh, grey Bladder length: 48 cm (18.9 in) Bladder width: 21 cm (8.3 in) Limb circumference: 44–56 cm (17.3–22 in)	1 cuff		•	•



989803147841
M4552B



989803147851
M4553B



989803147861
M4554B



989803147871
M4555B



989803147881
M4556B



989803147891
M4557B



989803147901
M4558B



989803147911
M4559B

Non-invasive blood pressure

Multi-patient cuffs

NBP cuff kits – single hose

Ordering code	Alternative ordering code	Description	Packaging	Use with	Europe	USA
864288		Easy Care adult kit 4 sizes: small adult, adult, large adult, thigh	consists of 4 cuffs: M4554B, M4555B, M4557B, M4559B	NBP module: 862278; MMS: 862442, 866462; MP2: 865040; MP5: 865024, 865322, 865120; X2: 865039; X3: 867030; MX100: 867033; MB1 bundle: 866044; MB2 bundle: 866045; MB3 bundle: 866046; CM10: 863301, 863365; CM12: 863303, 863366; CM100: 863300; CM120: 863302; CM150: 863304; VS1 863055, 863056, 863057, 863058, 863059, 863060, 863061, 863062; C3: 862474, 862478; VM4: 863063, 863085, 863287; VM6: 863064, 863065, 863086, 863288; VM8: 863066, 863068, 863087, 863088, 863289; VS2: 863079, 863080, 863081, 863082, 863278, 863279; VS3: 863069, 863070, 863071, 863072, 863073, 863074, 863285; VS4: 863283, 863286; VSi: 863275, 863276, 863277; Series 50 FM: 862334, 862335, 862336, 862337; FM20: 862198; FM30: 862199; FM40: 865132; FM50: 865071	•	•
864289		Easy Care pediatric kit 4 sizes: infant, pediatric, small adult, adult	consists of 4 cuffs: M4552B, M4553B, M4554B, M4555B		•	•
864290		Easy Care assortment kit 6 sizes: infant, pediatric, small adult, adult, large adult, thigh	consists of 6 cuffs: M4552B, M4553B, M4554B, M4555B, M4557B, M4559B		•	•
864291		Easy Care adult long kit 6 sizes: small adult, adult, adult long, large adult, large adult long, thigh	consists of 6 cuffs: M4554B, M4555B, M4556B, M4557B, M4558B, M4559B		•	•

Non-invasive blood pressure

Single-patient cuffs

Single Care cuffs

Ordering code	Alternative ordering code	Description	Packaging	Use with	Europe	USA
989803182281		Pediatric, green	20 cuffs	NBP module: 862278; MMS: 862442, 866462;	•	•
989803182291		Small adult, light blue	20 cuffs	MP2: 865040; MP5: 865024, 865322, 865120;	•	•
989803182301		Adult, navy blue	20 cuffs	X2: 865039; X3: 867030; MX100: 867033;	•	•
989803182311		Adult XL, navy blue with edge striping	20 cuffs	MB1 bundle: 866044; MB2 bundle: 866045;	•	•
989803182321		Large adult, burgundy	20 cuffs	MB3 bundle: 866046; VS1: 863055, 863056,	•	•
989803183311		Infant, orange	10 cuffs	863057, 863058, 863059, 863060, 863061,	•	•
989803183321		Pediatric, green	10 cuffs	863062; C3: 862474, 862478; VM4: 863063,	•	•
989803183331		Small adult, light blue	10 cuffs	863085, 863287; VM6: 863064, 863065,	•	•
989803183341		Adult, navy blue	10 cuffs	863086, 863288; VM8: 863066, 863068,	•	•
989803183351		Adult XL, navy blue with edge striping	10 cuffs	863087, 863088, 863289; VS2: 863079,	•	•
989803183361		Large adult, burgundy	10 cuffs	863080, 863081, 863082, 863278, 863279;	•	•
989803183371		Thigh, grey	10 cuffs	VS3: 863069, 863070, 863071, 863072,	•	•
				863073, 863074, 863285; VS4: 863283,	•	•
				863286; VSi: 863275, 863276, 863277;	•	•
				CM10: 863301, 863365; CM12: 863303, 863366;	•	•
				CM100: 863300; CM120: 863302; CM150:	•	•
				863304; XPER Flex Cardio: 860335, 860338	•	•



989803182281



989803182291



989803182301



989803182311



989803182321



Non-invasive blood pressure

Single-patient cuffs

Soft neonatal/infant cuffs – single hose

Ordering code	Alternative ordering code	Description	Packaging	Use with	Europe	USA
989803167231	M1866S	Neonatal soft single-patient cuff, size #1, single hose	40 cuffs	NBP module: 862278; MMS: 862442, 866462; MP2: 865040; MP5: 865024, 865322, 865120; X2: 865039; X3: 867030; MX100: 867033; MB1 bundle: 866044; MB2 bundle: 866045; MB3 bundle: 866046; VS1: 863055, 863056, 863057, 863058, 863059, 863060, 863061, 863062; C3: 862474, 862478; VM4: 863063, 863085, 863287; VM6: 863064, 863065, 863086, 863288; VM8: 863066, 863068, 863087, 863088, 863289; VS2: 863079, 863080, 863081, 863082, 863278, 863279; VS3: 863069, 863070, 863071, 863072, 863073, 863074, 863285; VS4: 863283, 863286; VSi: 863275, 863276, 863277; CM10: 863301, 863365; CM12: 863303, 863366; CM100: 863300; CM120: 863302; CM150: 863304	•	•
989803167241	M1868S	Neonatal soft single-patient cuff, size #2, single hose	40 cuffs		•	•
989803167251	M1870S	Neonatal soft single-patient cuff, size #3, single hose	40 cuffs		•	•
989803167261	M1872S	Neonatal soft single-patient cuff, size #4, single hose	40 cuffs		•	•
989803167271	M1873S	Infant soft single-patient cuff, size #5, single hose	40 cuffs		•	•
989803167551		Neonatal soft single-patient cuffs, single hose	50 cuffs Consists of: 5 x M1866S, 10 x M1868S, 20 x M1870S, 10 x M1872S & 5 x M1873S		•	•



989803167231
M1866S



989803167241
M1868S



989803167251
M1870S



989803167261
M1872S



989803167271
M1873S



989803167551

Non-invasive blood pressure

Single-patient cuffs

Vinyl neonatal/infant cuffs

Ordering code	Alternative ordering code	Description	Packaging	Use with	Europe	USA
989803167181	M1866B	Neonatal single-patient cuff, size 1, single hose New connector configuration, replaces the M1866A Limb circumference: 3.1–5.7 cm (1.2–2.2 in)	40 cuffs	CM10: 863301, 863365; CM12: 863303, 863366; CM100: 863300; CM120: 863302; CM150: 863304; NBP module: 862278; MMS: 862392, 862442; X2: 865039; MP2: 865040; MP5: 865024, 865322; VM4: 863063; VM6: 863064, 863065; VM8: 863066, 863068; VS1: 863055, 863056, 863057, 863058, 863059, 863060, 863061; VS2: 863079, 863080, 863081, 863082, 863278; VS3: 863069, 863070, 863071, 863072, 863073, 863074; VSi: 863275, 863276; Legacy HP monitors: 78352A, 78352C, 78834C	•	•
989803167191	M1868B	Neonatal single-patient cuff, size 2, single hose New connector configuration, replaces the M1868A Limb circumference: 4.3–8.0 cm (1.7–3.1 in)	40 cuffs		•	•
989803167201	M1870B	Neonatal single-patient cuff, size 3, single hose New connector configuration, replaces the M1870A Limb circumference: 5.8–10.9 cm (2.2–4.3 in)	40 cuffs		•	•
989803167211	M1872B	Neonatal single-patient cuff, size 4, single hose New connector configuration, replaces the M1872A Limb circumference: 7.1–13.1 cm (2.8–5.5 in)	40 cuffs		•	•
989803167221	M1873B	Infant single-patient cuff, size 5, single hose New connector configuration Limb circumference: 10–15 cm (3.9–5.9 in)	40 cuffs		•	•
989803167541		Neonatal single-patient NBP kit New connector configuration, replaces the M1820-60020	50 cuffs Consists of: 5x M1866B size 1, 10x M1868B size 2, 20x M1870B size 3, 10x M1872B size 4, 5x M1873B size 5		•	•



989803167181
M1866B
989803167191
M1868B
989803167201
M1870B
989803167211
M1872B
989803167221
M1873B



989803167541

Non-invasive blood pressure

Single-patient cuffs Gentle Care cuffs – single hose

Ordering code	Alternative ordering code	Description	Packaging	Use with	Europe	USA
989803148001	M4572B	Infant, orange Bladder length: 15 cm (5.9 in) Bladder width: 5.5 cm (2.2 in) Limb circumference: 10–15 cm (3.9–5.9 in)	10 cuffs	NBP module: 862278; MMS: 862442, 866462; MP2: 865040; MP5: 865024, 865322, 865120; X2: 865039; X3: 867030; MX100: 867033; MB1 bundle: 866044; MB2 bundle: 866045; MB3 bundle: 866046; VS1: 863055, 863056, 863057, 863058, 863059, 863060, 863061, 863062; C3: 862474, 862478; VM4: 863063, 863085, 863287; VM6: 863064, 863065, 863086, 863288; VM8: 863066, 863068, 863087, 863088, 863289; VS2: 863079, 863080, 863081, 863082, 863278, 863279; VS3: 863069, 863070, 863071, 863072, 863073, 863074, 863285; VS4: 863283, 863286; VSi: 863275, 863276, 863277; XPER Flex Cardio: 860335, 860338; FM20: 862198; FM30: 862199; FM40: 865132; FM50: 865071	•	•
989803148011	M4573B	Pediatric, green Bladder length: 21.5 cm (8.5 in) Bladder width: 8 cm (3.1 in) Limb circumference: 14–21.5 cm (5.5–8.5 in)	10 cuffs		•	•
989803148021	M4574B	Small adult, light blue Bladder length: 24 cm (9.4 in) Bladder width: 10.6 cm (4.2 in) Limb circumference: 20.5–28.5 cm (8–11.2 in)	10 cuffs		•	•
989803148031	M4575B	Adult, navy blue Bladder length: 30 cm (11.8 in) Bladder width: 13.5 cm (5.3 in) Limb circumference: 27.5–36 cm (10.8–14.1 in)	10 cuffs		•	•
989803148041	M4576B	Adult extra-long, navy blue Bladder length: 30 cm (11.8 in) Bladder width: 13.5 cm (5.3 in) Limb circumference: 27.5–36 cm (10.8–14.1 in)	10 cuffs		•	•
989803148051	M4577B	Large adult, burgundy Bladder length: 38 cm (15 in) Bladder width: 17 cm (6.7 in) Limb circumference: 35–45 cm (13.7–17.7 in)	10 cuffs		•	•
989803148061	M4578B	Large adult extra-long, burgundy Bladder length: 38 cm (15 in) Bladder width: 17 cm (6.7 in) Limb circumference: 35–45 cm (13.7–17.7 in)	10 cuffs		•	•



989803148001
M4572B
989803148011
M4573B
989803148021
M4574B
989803148031
M4575B
989803148041
M4576B
989803148051
M4577B
989803148061
M4578B

Non-invasive blood pressure

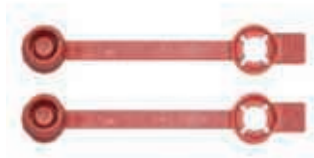
Accessories and hoses

NBP cuff caps

Ordering code	Alternative ordering code	Description	Packaging	Use with	Europe	USA
989803151601		Cuff caps for single hose cuffs	10 caps	Air hose: M1598B, M1599B	•	•
989803151611		Cuff caps for double hose cuffs	20 caps		•	•



989803151601



989803151611

Non-invasive blood pressure

Accessories and hoses

Blood pressure air hoses

Ordering code	Alternative ordering code	Description	Packaging	Use with	Europe	USA
989803104331	M1598B	Adult NBP air hose Length: 1.5 m (4.92 ft)	1 air hose	NBP module: 862278; MMS: 862442, 866462; MP2: 865040; MP5: 865024, 865322, 865120; X2: 865039; X3: 867030; MX100: 867033; MB1 bundle: 866044; MB2 bundle: 866045; MB3 bundle 866046; VS1: 863055, 863056, 863057, 863058, 863059, 863060, 863061, 863062; C3: 862474, 862478; VM4: 863063, 863085, 863287; VM6: 863064, 863065, 863086, 863288; VM8: 863066, 863068, 863087, 863088, 863289; VS2: 863079, 863080, 863081, 863082, 863278, 863279; VS3: 863069, 863070, 863071, 863072, 863073, 863074, 863285; VS4: 863283, 863286; VSi: 863275, 863276, 863277; Series 50 FM: 862334, 862335, 862336, 862337; FM20: 862198; FM30: 862199; FM40: 865132; FM50: 865071; CM10: 863301, 863365; CM12: 863303, 863366; CM100: 863300; CM120: 863302; CM150: 863304 Except for product M1598B: Xper Flex Cardio; 860335, 860338	•	•
989803104341	M1599B	Adult NBP air hose Length: 3.0 m (9.8 ft)	1 air hose		•	•
989803166851	M1596C	Neonatal NBP air hose Length: 1.5 m (4.92 ft)	1 air hose		•	•
989803166861	M1597C	Neonatal NBP air hose Length: 3.0 m (9.8 ft)	1 air hose		•	•



989803104331
M1598B



989803104341
M1599B



989803166851
M1596C



989803166861
M1597C

Invasive blood pressure

Reusable invasive blood pressure solution

Ordering code	Alternative ordering code	Description	Packaging	Use with	Europe	USA
989803102481	CPJ84022	Single-use sterile domes	50 domes	CM10: 863301, 863365; CM12: 863303, 863366; CM100: 863300; CM120: 863302; CM150: 863304; CPJ840J5; CPJ840J6; IBP module: M1006A, M1006B, MMS: 862392, 862442; X2: 865039; MP2: 865040; MP5: 865024; Hemodynamic ext.: 862111; Capnography ext.: 862187; Mainstream ext.: 862394; Microstream® ext.: 862393, 865377; VM6: 863065; VM8: 863066, 863068	•	•
989803102491	CPJ84046	Transducer holder	4 holders	MP2: 865040; MP5: 865024, 865120; X2: 865039; X3: 867030; MX100: 867033; Microstream® ext.: 862393, 865377; HeartStart MRx: 861288, 861289, 861464, 861480, 861481, 861482, 861483, 861484	•	•
989803102511	CPJ840J6	Reusable pressure transducer, used to measure arterial and venous blood pressure Includes one transducer holder Cable length: 3 m (9.8 ft)	1 transducer	MP2: 865040; MP5: 865024; IBP module: M1006A, M1006B; MMS: 862392, 862442; X2: 865039; X3: 867030; Capnography ext.: 862187; Mainstream CO ₂ module 862282; Mainstream ext.: 862394; VM6: 863065; VM8: 863066, 863068; Microstream® ext.: 862393, 865377; CM10: 863301, 863365; CM12: 863303, 863366; CM100: 863300; CM120: 863302; CM150: 863304	•	•
989803102521	CPJ84447	IV pole mount	1 mount	CPJ840J5 or CPJ840J6 with instruments: M8102A, M8105A; IBP module: M1006A, M1006B, M1312A, MMS: 862392, 862442; X2: 865039; MP2: 865040; MP5: 865024; Capnography ext.: 862187; Mainstream ext.: 862394; Microstream® ext.: 862393, 865377; VM6: 863065; VM8: 863066, 863068	•	•
989803136281	CPJ84026	Monitoring line set	10 sets/bag	VM6: 863065; VM8: 863066, 863068, 863087, 863088; HeartStart MRx: 861288, 861289; X2: 865039; X3: 867030; MP2: 865040; MP5: 865024, 865120; Microstream® ext.: 862393, 865377	•	•
989803199741		Dual IBP adapter	1 adapter	MX100: 867033; X3: 867030; Hemodynamic ext.: 867039; Capnography ext.: 867040; Microstream® ext.: 867041	•	•



989803102481
CPJ84022



989803102491
CPJ84046



989803102511
CPJ840J6



989803102521
CPJ84447



989803136281
CPJ84026



989803199741

Paper

Recording paper

Ordering code	Alternative ordering code	Description	Packaging	Use with	Europe	USA
989803101571	40477A	Thermal array recorder paper, 50 mm x 30.5 m (1.9 in x 100 ft)	10 rolls	Recorder: M1116A,M1116B, M3176B; MP 20 Junior, MP20, MP30, MP40, MP50, MP60, MP70, MP90; MMS: 862442	•	•
989803109871	M4816A	Thermal array recorder paper, 50 mm x 30.5 m (1.9 in x 100 ft)	10 rolls	M3925A; M3176C; M1116C	•	•
989803136891		Thermal array recorder paper, 5.8 cm x 30.5 m (2.2 in x 100 ft)	5 rolls	VS3: 863069; VM4: 863063, 863085; VM6: 863064, 863065, 863086; VM8: 863066, 863068, 863087, 863088, 863317; CM10: 863301, 863365; CM12: 863303, 863366; CM100: 863300; CM120: 863302; CM150: 863304	•	•
989803190381		Efficia chemical thermal recorder paper, 50 mm (1.9 in), no lines	12 rolls	DFM 100: 866199	•	



989803101571
40477A



989803109871
M4816A



989803136891



989803190381

Pulse oximetry

Reusable sensors

Ordering code	Alternative ordering code	Description	Packaging	Use with	Europe	USA
989803144371	M1191B	Reusable adult SpO ₂ sensor, 8-pin connector Length: 2 m (6.5 ft) Patient size: > 50 kg (> 110 lb)	1 sensor	Pulse oximetry module: 862112; MMS: 862442, 866462; MP2: 865040; MP5: 865024, 865322, 865120; X2: 865039; X3: 867030; MX100: 867033; MMX: 867036; VM1: 863264, 863265, 863266; VM3: 863077; VM4: 863063, 863085; VM6: 863064, 863065, 863086; VM8: 863066, 863068, 863087, 863088, 863317; VS2: 863278, 863279; VS3: 863071, 863072, 863073, 863074; VS4: 863283; VSi: 863276; VS30: 863359 CM10: 863301, 863365; CM12: 863303, 863366; CM100: 863300, 863320; CM120: 863302, 863321; CM150: 863304, 863322 HeartStart MRx: 861288, 861289, 861464, 861482, 861491, 860396, 860397, 860398, 861465; HeartStart XL+: 861290.	•	•
989803144381	M1191BL	Reusable adult SpO ₂ sensor, 8-pin connector Length: 3 m (9.8 ft) Patient size: > 50 kg (> 110 lb)	1 sensor		•	•
989803128591	M1191T	Reusable adult SpO ₂ sensor, 9-pin (D-sub) connector Length: 0.45 m (1.5 ft) Patient size: > 50 kg (> 110 lb)	1 sensor		•	•
989803205871		Reusable pediatric/small adult finger SpO ₂ Sensor, 8-pin connector (previously M1192A) Length: 1.5 m (4.9 ft) Patient size: 15–50 kg (33–110 lb)	1 sensor		•	•
989803103261	M1195A	SpO ₂ infant sensor, 8-pin connector Length: 1.5 m (4.9 ft) Patient size: 4–15 kg (8.8–33 lb)	1 sensor		•	•
989803205901		Reusable adult SpO ₂ clip sensor, 8-pin connector (previously M1196A) Length: 3 m (9.8 ft) Patient size: > 40 kg (> 88 lb)	1 sensor	Except product M1191T, M1195A, M1196T: DFM100: 866196	•	•
989803205911		Reusable adult SpO ₂ clip sensor, 9-pin (D-sub) connector (previously M1196T) Length: 0.90 m (2.9 ft) Patient size: >40 kg (> 88 lb)	1 sensor	Except product M1195A: FM20: 862198; FM30: 862199; FM40: 865132; FM50: 865071; MX40: 865350, 865351, 867146.	•	•

Pulse oximetry

Reusable sensors

Ordering code	Alternative ordering code	Description	Packaging	Use with	Europe USA
989803205881		Reusable neonatal hand/foot SpO ₂ sensor, 8-pin connector (previously M1193A) Length: 1.5 m (4.9 ft) Patient size: 1–4 kg (2.2–8.8 lb)	1 sensor	Pulse oximetry module: 862112; MMS: 862442, 866462; MP2: 865040; MP5: 865024, 865322, 865120; X2: 865039; X3: 867030; MX100: 867033; MMX: 867036;	• •
989803205891		Reusable adult/pediatric ear clip SpO ₂ sensor, 8-pin connector (previously M1194A) Length: 1.5 m (4.9 ft) Patient size: > 40 kg (> 88 lb)	1 sensor	VM1: 863264, 863265, 863266; VM3: 863077; VM4: 863063, 863085; VM6: 863064, 863065, 863086; VM8: 863066, 863068, 863087, 863088, 863317; VS2: 863278, 863279; VS3: 863071, 863072, 863073, 863074; VS4: 863283; VSi: 863276; VS30: 863359 CM10: 863301, 863365; CM12: 863303, 863366; CM100: 863300, 863320; CM120: 863302, 863321; CM150: 863304, 863322 HeartStart MRx: 861288, 861289, 861464, 861482, 861491, 860396, 860397, 860398, 861465 Except product M1193A: FM20: 862198; FM30: 862199; FM40: 865132; FM50: 865071; MX40: 865350, 865351, 867146; HeartStart XL+: 861290.	• •



989803144371
M1191B



989803144381
M1191BL



989803128591
M1191T



989803205871



989803103261
M1195A



989803205901



989803205881



989803205881



989803205891

Pulse oximetry

Single-patient sensors

Ordering code	Alternative ordering code	Description	Packaging	Use with	Europe	USA
989803205381		Nasal Alar SpO ₂ sensor, compatible with FAST technology	20 sensors	Pulse oximetry module: 862112; MMS: 862442; MP5: 865024, 865322, 865120; X2: 865039; X3: 867030; MX100: 867033	•	•
989803205391		Nasal Alar SpO ₂ sensor, compatible with FAST and Nellcor™ technologies	24 sensors	Pulse oximetry module: 862112; MMS: 862442; MP5: 865024, 865322, 865120; X2: 865039; X3: 867030; MX100: 867033; Nellcor N-600x; Nellcor N-595; Nellcor N-395; DataScope Passport 2; GE Dash 3000		•
989803205831		Disposable adult/pediatric SpO ₂ sensor, 9-pin (D-sub) connector (previously M1131A) Length: 45 cm (17.7 in) Patient size: > 20 kg (> 44 lb)	20 sensors	Pulse oximetry module: 862112; MMS: 862442, 866462; MP2: 865040; MP5: 865024, 865322, 865120; X2: 865039; X3: 867030; MX100: 867033; MMX: 867036; VM1: 863264, 863265, 863266; VM3: 863077; VM4: 863063, 863085; VM6: 863064, 863065, 863086; VM8: 863066, 863068, 863087, 863088, 863317; VS2: 863278, 863279; VS3: 863071, 863072, 863073, 863074; VS4: 863283; VSi: 863276; VS30: 863359; CM10: 863301, 863365; CM12: 863303, 863366; CM100: 863300, 863320; CM120: 863302, 863321; CM150: 863304, 863322; HeartStart MRx: 861288, 861289, 861464, 861482, 861491, 860396, 860397, 860398, 861465; HeartStart XL+: 861290; FM20: 862198; FM30: 862199; FM40: 865132; FM50: 865071; MX40: 865350, 865351, 867146.	•	•

Pulse oximetry

Single-patient sensors

Ordering code	Alternative ordering code	Description	Packaging	Use with	Europe	USA
989803128541	M1132A	Infant disposable SpO ₂ sensor, 9-pin (D-sub) connector Length: 0.90 m (2.9 ft) Patient size: 3–10 kg (6.6–22 lb)	20 sensors	Pulse oximetry module: 862112; MMS: 862442, 866462; MP2: 865040; MP5: 865024, 865322, 865120; X2: 865039; X3: 867030; MX100: 867033; MMX: 867036;	•	•
989803205851		Neonatal/infant/adult disposable SpO ₂ sensor, 9-pin (D-sub) connector (previously M1133A) Length: 0.90 m (2.9 ft) Patient sizes: Adult (finger): > 40 kg (> 88 lb) Neonate (foot/hand): < 3 kg (< 6.6 lb) Infant (big toe/thumb): 10–20 kg (22–44 lb)	20 sensors	VM1: 863264, 863265, 863266; VM3: 863077; VM4: 863063, 863085; VM6: 863064, 863065, 863086; VM8: 863066, 863068, 863087, 863088, 863317; VS2: 863278, 863279; VS3: 863071, 863072, 863073, 863074; VS4: 863283; VSi: 863276; VS30: 863359 CM10: 863301, 863365; CM12: 863303, 863366;	•	•
989803205861		Adhesive-free neonatal/infant/adult disposable SpO ₂ sensor, 9-pin (D-sub) connector (previously M1134A) Length: 0.90 m (2.9 ft) Patient sizes: Adult (finger): > 40 kg (> 88 lb) Neonate (foot/hand): < 3 kg (< 6.6 lb) Infant (big toe/thumb): 10–20 kg (22–44 lb)	20 sensors	CM100: 863300, 863320; CM120: 863302, 863321; CM150: 863304, 863322 Except product M1134A: HeartStart XL+: 861290. Except product M1132A: FM20: 862198; FM30: 862199; FM40: 865132; FM50: 865071; MX40: 865350, 865351, 867146.	•	•



989803205381
M1140A



989803205831



989803205851



989803205861



989803164921
M1134A

Adapter cables

Adapter cables for Philips sensors

Ordering code	Alternative ordering code	Description	Packaging	Use with	Europe USA
989803105681	M1941A	SpO ₂ Extension Cable (8-pin), adds additional length between 8-pin sensors and 8-pin sockets Length: 2 m (6.6 ft)	1 cable	Pulse oximetry module: 862112; MMS: 862442, 866462; MP2: 865040; MP5: 865024, 865322, 865120; X2: 865039; X3: 867030; MX100: 867033;	• •
989803105691	M1943A	SpO ₂ Adapter Cable (8-pin), adapts 9-pin sensors to 8-pin sockets Length: 1 m (3.3 ft)	1 cable	MMX: 867036; VM1: 863264, 863265, 863266; VM3: 863077; VM4: 863063, 863085; VM6: 863064, 863065, 863086; VM8: 863066, 863068, 863087, 863088, 863317; VS2: 863278, 863279; VS3: 863071, 863072, 863073, 863074; VS4: 863283; VSi: 863276; VS30: 863359 CM10: 863301, 863365; CM12: 863303, 863366; CM100: 863300, 863320; CM120: 863302, 863321; CM150: 863304, 863322 HeartStart XL+: 861290 M1195A: FM20: 862198; FM30: 862199; FM40: 865132; FM50: 865071; MX40: 865350, 865351, 867146	• •
989803128651	M1943AL	SpO ₂ Adapter Cable (8-pin), adapts 9-pin sensors to 8-pin sockets Length: 3 m (9.8 ft)	1 cable	Except product M1143A, M1143AL: DFM100: 866196 Except product M1143AL: HeartStart MRx: 861288, 861289, 861464, 861482, 861491, 860396, 860397, 860398, 861465	• •
989803136591	M1943NL	SpO ₂ Adapter Cable for OxiMax™ Instruments (8-pin), adapts 9-pin sensors to 8-pin sockets Use only with IntelliVue A02 and A04 sockets Length: 3 m (9.8 ft)	1 cable	Pulse oximetry module: 862112; Nellcor OxiMax IV Module: 867193 MMS: 862442; MP2: 865040; MP5: 865024, 865322, 865120; X2: 865039; X3: 867030; MX100: 867033; MMX: 867036	• •



989803105681
M1941A



989803105691
M1943A



989803128651
M1943AL



989803136591
M1943NL

Adapter cables

Masimo® rainbow® SET™ SpO₂ adapter cables

Ordering code	Alternative ordering code	Description	Packaging	Use with	Europe	USA
989803182411		rainbow® SET™ cable for rainbow, angled Length: 1.2 m (4 ft)	1 cable	Masimo® rainbow® Module: 867191; MMS: 866462; X2: 865039; X3: 86703; MMX: 867036; MP2: 865040; MP5: 865024, 865322	•	•
989803182421		rainbow® SET™ cable for rainbow, straight Length: 1.2 m (4 ft)	1 cable	MMS: 866462; MP2: 865040; MP5: 865024, 865322; X2: 865039; X3: 86703; MMX: 867036;	•	•
989803182431		rainbow® SET™ cable for ALL RB measures Length: 3 m (10 ft)	1 cable	Masimo® rainbow® Module: 867191; VS30: 863359, 863380; CM10: 863301, 863365; CM12: 863303, 863366; CM100: 863300, 863320; CM120: 863302, 863321; CM150: 863304, 863322	•	•
989803186471		rainbow® SET™ cable for rainbow, straight Length: 3.7 m (12 ft)	1 cable	Masimo® rainbow® Module: 867191; MMS: 866462; X2: 865039; X3: 86703; MMX: 867036;	•	•
989803186501		rainbow® SET™ cable for LNCS® Length: 3 m (10 ft)	1 cable	MP2: 865040; MP5: 865024, 865322; VS4: 863283	•	•
989803186531		rainbow® SET™ cable for LNCS®, straight Length: 1.2 m (4 ft)	1 cable	MMS: 866462; MP2: 865040; MP5: 865024, 865322; X2: 865039; X3: 86703; MMX: 867036; Masimo® rainbow® Module: 867191; VS4: 863283; VS30: 863359, 863380; CM10: 863301, 863365; CM12: 863303, 863366; CM100: 863300; CM120: 863302; CM150: 863304, 863322	•	•



989803182411



989803182421



989803182431



989803186471



989803186491

Adapter cables

Masimo® rainbow® SET™ LNCS® SpO₂ adapter cables

Ordering code	Alternative ordering code	Description	Packaging	Use with	Europe	USA
989803186501		rainbow® SET™ cable for LNCS® Length: 3 m (10 ft)	1 cable	Masimo® rainbow® Module: 867191; MMS: 866462; X2: 865039; MMX: 867036; MP2: 865040; MP5: 865024, 865322; VS4: 863283	•	•
989803186531		rainbow® SET™ cable for LNCS®, straight Length: 1.2 m (4 ft)	1 cable	MMS: 866462; MP2: 865040; MP5: 865024, 865322; X2: 865039; MMX: 867036; Masimo® rainbow® Module: 867191; VS4: 863283; VS30: 863359, 863380; CM10: 863301, 863365; CM12: 863303, 863366; CM100: 863300; CM120: 863302; CM150: 863304, 863322	•	•



989803186501



989803186531

Adapter cables

Masimo® LNCS® SpO₂ adapter cable

Ordering code	Alternative ordering code	Description	Packaging	Use with	Europe	USA
989803148221		Masimo® SET™ LNCS® adapter cable, adapts LNCS® sensors to Philips monitors Length: 3 m (10 ft)	1 cable	VM1: 863264, 863265, 863266; VM4: 863063, 863085; VM6: 863064, 863065, 863086; VM8: 863066, 863068, 863087, 863088, 863317; VS2: 863278, 863279; VS3: 863069, 863070, 863071, 863072, 863073, 863074; VS4: 863283; VSi: 863276, 863277; MMS: 862442; MP2: 865040; MP5: 865024, 865322, 865120; X2: 865039; X3: 867030; MX100: 867033; MMX: 867036; MX40: 865350, 865351; Pulse oximetry module: 862112; Masimo® SET™ Module: 867192; CM10: 863301, 863365; CM12: 863303, 863366; CM100: 863300; CM120: 863302; CM150: 863304, 863322; FM30: 862199; FM40: 865132; FM50: 865071	•	•



989803148221

Adapter cables

Masimo RD SET SpO₂ adapter cables

Ordering code	Alternative ordering code	Description	Packaging	Use with	Europe	USA
989803206901		RD SET MP-05 Philips Dual Keyed Cable; 5 ft.	1 cable	MP2: 865040; MP5: 865024, 865322; MMS: 862442, 866462; MMX: 867036; MX100: 867033; X2: 865039; X3: 867030	•	•
989803206911		RD SET MP-12 Philips Dual Keyed Cable; 12 ft.	1 cable		•	•

Adapter cables

Masimo RD rainbow SET SpO₂ adapter cables

Ordering code	Alternative ordering code	Description	Packaging	Use with	Europe	USA
989803206931		RD rainbow SET 25R – 12 Cable; 12 ft.	1 cable	MP2: 865040; MP5: 865024, 865322; MMS: 862442, 866462; MMX: 867036; MX100: 867033; X2: 865039; X3: 867030	•	•



989803206901



989803206911



989803206931

IntelliVue Cableless measurement

Mobile CL SpO₂ sensors and cradle kits

Ordering code	Alternative ordering code	Description	Packaging	Use with	Europe	USA
989803165941		Mobile CL 20 SpO ₂ sensors and cradles (includes wristbands)	20 sensor kits	SpO ₂ pod: 865215	•	•



989803165941

IntelliVue Cableless measurement

Mobile CL non-invasive blood pressure cuffs

Ordering code	Alternative ordering code	Description	Packaging	Use with	Europe	USA
989803163191		Mobile CL reusable adult cuff, light mocha with navy blue tube Cuff width: 13 cm (5.1 in), bladder length: 26 cm (10.2 in), limb circumference: 26–34.5 cm (10.2–13.5 in)	1 cuff	NBP pod: 865216	•	•
989803163201		Mobile CL single-patient use adult cuff, navy blue Cuff width: 13 cm (5.1 in), bladder length: 26 cm (10.2 in), limb circumference: 26–34.5 cm (10.2–13.5 in)	20 cuffs		•	•
989803163211		Mobile CL reusable large adult cuff, light mocha with burgundy tube Cuff width: 16 cm (6.2 in), bladder length: 36.5 cm (14.3 in), limb circumference: 33.5–45 cm (13.1–17.7 in)	1 cuff		•	•



989803163191



989803163201



989803163211

IntelliVue Cableless measurement

Mobile CL non-invasive blood pressure accessories

Ordering code	Alternative ordering code	Description	Packaging	Use with	Europe	USA
989803163131		Mobile CL extension air hose Length: 1 m (3.3 ft)	1 hose	NBP pod: 865216	•	•
989803163251		Mobile CL NBP cradle kit	20 cradles		•	•
989803187431		Mobile CL adult bayonet air hose Length: 1 m (3.3 ft)	1 hose		•	•



989803163131



989803163251



989803187431

IntelliVue Cableless measurement

Mobile CL transmitter accessories

Ordering code	Alternative ordering code	Description	Packaging	Use with	Europe USA
989803168881		Mobile CL 20 transmitter cradles	20 single-patient cradles	Transmitter: 865221	• •



989803168881

Temperature

Continuous measurement

Single use probes

Ordering code	Alternative ordering code	Description	Packaging	Use with	Europe	USA
989803100951	21091A	Disposable sterile skin surface temperature probe Shelf life: at least 12 months, length: 76 cm (30 in)	20 probes	MP monitors: MP2: 865040; MP5: 865024; SureSigns monitors: VM6: 863064, 863065, 863086; VM8: 863066, 863068, 863087, 863088;	•	•
989803105321	M1837A	Esophageal/rectal temperature probe, 9 FR, single- patient use, sterilized, continuous monitoring Shelf life: at least 12 months, length: 91 cm (36 in)	20 probes	CM10: 863301, 863365; CM12: 863303, 863366; CM100: 863300;	•	•
989803100941	21090A	Esophageal/rectal temperature probe, 12 FR, single-patient use, sterilized, continuous monitoring Shelf life: at least 12 months, length: 91 cm (36 in)	20 probes	CM120: 863302; CM150: 863304; MMS: 862392, 862442; X2: 865039; X3: 867030; MX100: 867033; Temperature module: 862291;	•	•
989803100961	21093A	Esophageal/stethoscope temperature probe, 12 FR, sterilized, continuous monitoring Shelf life: at least 12 months, length: 51 cm (20 in)	20 probes	Microstream ext.: 862393, 865377	•	•
989803100971	21094A	Esophageal/stethoscope temperature probe, 18 FR, sterilized, continuous monitoring Shelf life: at least 12 months, length: 51 cm (20 in)	20 probes		•	•
989803100981	21095A	Esophageal/stethoscope temperature probe, 24 FR, sterilized, continuous monitoring Shelf life: at least 12 months, length: 51 cm (20 in)	20 probes		•	•
989803106071	M2255A	Foley catheter temperature probe, 14 FR, sterilized, continuous monitoring Shelf life: at least 12 months, length: 43 cm (17 in)	10 probes		•	•
989803100991	21096A	Foley catheter temperature probe, 16 FR, sterilized, continuous monitoring Shelf life: at least 12 months, length: 43 cm (17 in)	10 probes		•	•
989803101001	21097A	Foley catheter temperature probe, 18 FR, sterilized, continuous monitoring Shelf life: at least 12 months, length: 43 cm (17 in)	10 probes		•	•



989803100941
21090A



989803100951
21091A



989803100961
21093A



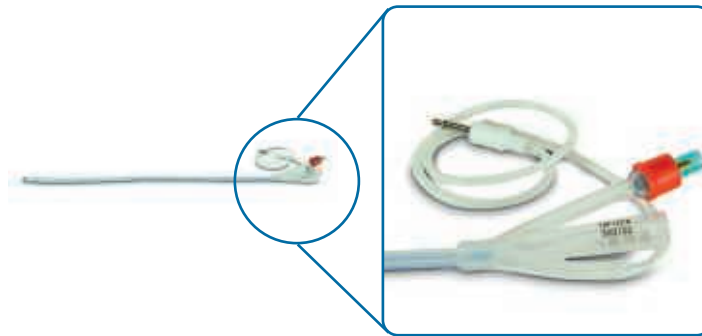
989803100971
21094A



989803100981
21095A



989803100991
21096A



989803101001
21097A



989803105321
M1837A



989803106071
M2255A

Temperature

Continuous measurement

Reusable extension adapter cables for single-patient probes

Ordering code	Alternative ordering code	Description	Packaging	Use with	Europe USA
989803100921	21082A	Adapter cable, connects single-use temperature probes to Philips (or HP or Agilent) monitors, accepts 3.5 mm (1/8 in) mini phone plug, 2-pin connector Length: 3 m (10 ft)	1 cable	CM10: 863301, 863365; CM12: 863303, 863366; CM100: 863300; CM120: 863302; CM150: 863304; Temperature module: 862291 MMS: 862392, 862442; X2: 865039; MP2: 865040; MP5: 865024; Microstream® ext.: 862393, 865377; VM6: 863064, 863065, 863086; VM8: 863066, 863068, 863087, 863088	•
989803100931	21082B	Adapter cable, connects single-use temperature probes to Philips (or HP or Agilent) monitors, accepts 3.5 mm (1/8 in) mini phone plug, 2-pin connector Length: 1.5 m (5 ft)	1 cable		•



989803100921
21082A

989803100931
21082B

Temperature

Continuous measurement

Reusable autoclavable probes

Ordering code	Alternative ordering code	Description	Packaging	Use with	Europe USA
989803100881	21075A	Esophageal/rectal temperature probe (autoclavable), 12 FR, reusable, continuous monitoring, 2-prong plug Length: 3 m (10 ft)	1 probe	MP monitors: MP2: 865040; MP5: 865024; SureSigns monitors: VM6: 863064, 863065, 863086; VM8: 863066, 863068, 863087, 863088;	•
989803100891	21076A	Esophageal/rectal temperature probe (autoclavable), 10 FR, reusable, continuous monitoring, 2-prong plug Length: 3 m (10 ft)	1 probe	CM10: 863301, 863365; CM12: 863303, 863366; CM100: 863300; CM120: 863302; CM150: 863304; MMS: 862392, 862442;	•
989803100901	21078A	Skin surface temperature probe (autoclavable), tape-on, reusable, continuous monitoring, 2-prong plug Length: 3 m (10 ft), diameter: 9.5 mm (0.37 in)	1 probe	X2: 865039; X3: 867030; MX100: 867033; Temperature module: 862291; Microstream ext.: 862393, 865377	•



989803100881
21075A



989803100891
21076A



989803100901
21078A

Temperature

Spot check measurement

Tympanic reusable probes and single-patient use covers (Genius)

Ordering code	Alternative ordering code	Description	Packaging	Use with	Europe USA
989803179381		Genius 2 probe cover (non-CE-marked), single-patient use, non-sterile Shelf life: at least 2 years, size: 43 x 30 x 14 cm (17 x 12 x 5.5 in)	2,112 probe covers per box	VS3; 863071, 863072; VS4: 863283; T ymp temperature module: 866149	•
989803180831		Genius 2 tympanic temperature probe, reusable, non-sterile	1 probe		•



989803179381



989803180831

Temperature

Spot check measurement

Predictive reusable temperature probes and covers

Ordering code	Alternative ordering code	Description	Packaging	Use with	Europe USA
989803109941	M4823A	Temperature probe covers	1,000 covers	Temperature probes: 989803143381, 989803143391; VS2: 863278; VSi: 863276; VS30: 863359, 863380	•
989803143381		Reusable oral temperature probe and well kit, predictive temp monitoring 2.7 m (9 ft)	1 probe	VS2: 863278, 863081, 863082; VS3: 863070, 863073, 863074; VSi: 863276; VM4: 863063, VM6: 863064, 863065, VM8: 863066, MP5: 865024, 865322, 865120	•
989803143391		Reusable rectal temperature probe and well kit, predictive temp monitoring 2.7 m (9 ft)	1 probe	VS2: 863278, 863081, 863082; VS3: 863070, 863073, 863074; VM4: 863063, VM6: 863064, 863065, VM8: 863066, MP5: 865024, 865322, 865121	•



989803109941
M4823A



989803143381



989803143391



Batteries

Patient monitoring batteries

Ordering code	Alternative ordering code	Description	Packaging	Use with	Europe	USA
451261017451	M4607-60001	Battery charger adapter	1 adapter	X2: 865039; MP2: 865040	•	•
989803135861	M4605A	Rechargeable lithium-ion battery, 10.8 volts Shelf life: at least 6 months	1 battery	IntelliVue MP20, MP30, MP40, MP50; MP5: 865024, 865322, 865120; FM20: 862198; FM30: 862199; Battery ext.: 865297; MX400: 866060; MX450: 866062; MX500: 866064; MX550: 866066	•	•
989803144631		Lithium-ion battery * Product available in China only	1 battery	VM3: 863077; VM4: 863063, 863085; VM6: 863064, 863065, 863086; VM8: 863066, 863068, 863088; Vital Signs ViewStation: 863067; VS3: 863069, 863070, 863071, 863072, 863073, 863074; VS2: 863079, 863080, 863081, 863082; VS4: 863283		
989803148701	M4607A	Rechargeable lithium-ion battery, 10.8 volts Shelf life: at least 4 months	1 battery	X2: 865039; MP2: 865040;	•	•
989803174131		MX40 lithium-ion battery, 3-pack, 3.7 volts, rechargeable Shelf life: 3 months	3 batteries	MX40: 865350, 865351, 867146	•	•
989803174891		MX40 battery adapter 3-pack, AA, disposable	3 batteries		•	•
989803176201		MX40 Lithium ion battery 1-pack, 3.7 volts, rechargeable Shelf life: 2 months	1 battery		•	•
989803174881		VM lithium-ion battery	1 battery	VS1: 863275, 863276, 863277; VS2: 863278, 863279; VM1: 863264, 863265, 863266	•	•
989803189981		Lithium-ion 3-cell battery pack	1 battery	CM10: 863301, 863365; CM12: 863303, 863366; CM100: 863300; CM120: 863302; CM150: 863304	•	

Batteries

Patient monitoring batteries

Ordering code	Alternative ordering code	Description	Packaging	Use with	Europe	USA
989803194541		Lithium-ion 9-cell battery pack	1 battery	CM10: 863301, 863365; CM12: 863303, 863366; CM100: 863300; CM120: 863302; CM150: 863304; Vital Sign View Station: 863067; VM4: 863063, 863085, 863287; VM6: 863064, 863065, 863086, 863288; VM8: 863066, 863068, 863087, 863088, 863317, 863289; VS2: 863278, 863279, 863079, 863080, 863081, 863082; VS3: 863069, 863070, 863071, 863072, 863073, 863074, 863285; VS4: 863283, 863286	•	•
989803196521		X3/MX100 lithium-ion battery	1 battery	X3: 867030; MX100: 867033	•	•
989803202201		X3/MX100 battery charger adapter	1 adapter		•	•



451261017451
M4607-60001



989803135861
M4605A



989803144631



989803148701
M4607A



989803174131



989803174881



989803174891



989803176201



989803194541



989803196521

Batteries

Telemetry batteries

Ordering code	Alternative ordering code	Description	Packaging	Use with	Europe USA
989803110231	ULBU9VLJ	Lithium battery, 9 volts Shelf life: 10 months	10 batteries	Telemetry: M2600A, M2601A	• •



989803110231
ULBU9VLJ

Accessories

Patient monitoring cases, bags and pads

Ordering code	Alternative ordering code	Description	Packaging	Use with	Europe	USA
989803153441		MP2/X2 carrying strap	1 strap	MP2: 865040; X2: 865039	•	•
989803163381		Display filter for MP2/X2 when night vision goggles (NVGs) are in use	1 filter	X2: 865039; MP2: 865040	•	•
989803174141		Carry pouch, waterproof	50 pouches/box	MX40: 865350, 865351, 865352; NBP pod: 865216	•	•
989803174151		Carry pouch, waterproof	200 pouches/box		•	•



989803153441



989803163381



989803174141 and 989803174151

Accessories

Telemetry pouches and protective covers

Ordering code	Alternative ordering code	Description	Packaging	Use with	Europe	USA
989803101971	9300-0768-050	Disposable water and chemical resistant telemetry pouch with snaps	50 pouches/box	Transmitter: 78100A, M1400A; Telemetry: M2600A; NBP pod: 865216	•	•
989803101981	9300-0768-200	Disposable water and chemical resistant telemetry pouch with snaps	50 pouches/box 4 boxes/case (200 pouches/case)		•	•
989803137831		Transceiver pouch shoulder strap and viewing window	50 pouches/box	TRx4851A: 862231; NBP pod: 865216	•	•
989803140371		Transceiver pouch shoulder strap and viewing window	50 pouches/box 4 boxes/case (200 pouches/case)		•	•
989803140441		SpO ₂ connector protective cover	10 covers		•	•
989803140451		TeleMon service port protective cover for TRx+ (ECG and SpO ₂)	10 covers	Transmitter: 862108, M2601B	•	•



989803137831 and 989803140371



989803140441



989803140451



Patient monitors and defibrillators

Product list



Patient monitors

Ordering code	Alternative ordering code	Description
862108		IntelliVue M4841A telemetry transceiver
862231		IntelliVue 2.4 GHz telemetry transceiver
862318	M1176A	Merlin bedside monitor
862392	M3000A	Basic multi-measurement server
862439		IntelliVue 1.4 GHz telemetry transceiver
862442	M3001A	IntelliVue multi-measurement server
862474, 862478		C3 patient monitor
863055, 863056, 863057, 863058, 863059, 863060, 863061, 863062		SureSigns VS1 monitor
863063, 863085, 863287		SureSigns VM4 bedside patient monitor
863064, 863065, 863086, 863288		SureSigns VM6 bedside patient monitor
863066, 863068, 863087, 863088, 863317, 863289		SureSigns VM8 bedside patient monitor
863069, 863070, 863071, 863072, 863073, 863074, 863285		SureSigns VS3 vital signs monitor
863077		SureSigns VM3 patient monitor
823264, 863265, 863266		SureSigns VM1 vital signs monitor
863275, 863276, 863277		SureSigns VS _i vital signs monitor
863278, 863279, 863079, 863080, 863081, 863082		SureSigns VS2 vital signs monitor
863283, 863286		SureSigns VS4 vital signs monitor with NBP and SpO ₂
863300, 863320		Efficia CM100 patient monitor
863301		Efficia CM10 patient monitor
863365		Efficia CM10 patient monitor (Brazil)
863302, 863321		Efficia CM120 patient monitor
863303		Efficia CM12 patient monitor

Patient monitors

Ordering code	Alternative ordering code	Description
863366		Efficia CM12 patient monitor (Brazil)
863304, 863322		Efficia CM150 patient monitor
863359, 863380		EarlyVue VS30 vital signs monitor
865024	M8105A	IntelliVue MP5 portable patient monitor
865039	M3002A	IntelliVue MMS X2 measurement module and patient monitor
865040	M8102A	IntelliVue MP2 portable patient monitor
865120	M8105AT	IntelliVue MP5T telemetry system and patient monitor
865215		IntelliVue Cableless SpO ₂ pod
865216		IntelliVue Cableless NBP pod
865221		IntelliVue Cableless transmitter
865322	M8105AS	IntelliVue MP5SC spot check patient monitor
865350		IntelliVue MX40 wearable patient monitor (US only), 1.4 GHz Smart-hopping
865351, 867146		IntelliVue MX40 wearable patient monitor, 2.4 GHz Smart-hopping
865352		IntelliVue MX40 wearable patient monitor, 802.11a/b/g
866060		IntelliVue MX400 portable/bedside monitor
866062		IntelliVue MX450 portable/bedside patient monitor
866064		IntelliVue MX500 portable/bedside monitor
866066		IntelliVue MX550 portable/bedside patient monitor
866462	M3001AL	IntelliVue multi-measurement server SLCP
867030		IntelliVue X3 measurement module and patient monitor
867033		IntelliVue MX100 patient monitor

Measurement modules

Ordering code	Alternative ordering code	Description
453563372301	M1025A	Anesthesia gas module
453563372311	M1025B	Anesthesia gas module
989803105521	M1918A	tcpO ₂ /pCO ₂ transducer
989803110391	M1001A	3 ECG channel parameter module
989803110421	M1008A	Noninvasive blood pressure module
989803159631	M1918B	tcpO ₂ /pCO ₂ transducer
M1002A	M1002A	3 ECG lead/respiration module
860335		XPER Flex Cardio medical equipment
860338		XPER Flex Cardio medical equipment
862111	M3012A	Hemodynamic measurement server extension
862112	M1020B	IntelliVue pulse oximetry module
862119	M1026B	Anesthesia gas module
862165	M1013A	IntelliVue G1 anesthesia gas module
862187	M3014A	Capnography extension
862227	M1019A	IntelliVue G5 anesthesia gas module
862275	M1001B	3 ECG channel parameter module
862276	M1002B	3 ECG channel/respiration module
862278	M1008B	Universal NBP module
862279	M1012A	Cardiac output module
862281	M1015A	Sidestream module
862282	M1016A	Mainstream CO ₂ module
862283	M1018A	Transcutaneous pO ₂ /pCO ₂ parameter module
862286	M1026A	Anesthesia gas module
862290	M1027A	IntelliVue EEG module
866078	M1027B	IntelliVue EEG module

Measurement modules

Ordering code	Alternative ordering code	Description
862291	M1029A	Temperature module
862393	M3015A	Microstream® CO ₂ extension
862394	M3016A	Mainstream CO ₂ 2nd press temp measurement extension
865021	M1014A	IntelliVue spirometry module
865377	M3015B	Microstream® CO ₂ extension
865383		IntelliVue NMT module
866044		MB1 invasive and temp bundle
866045		MB2 etCO ₂ bundle
866046		MB3 basic bundle
866149		Tympanic temperature module
866173		IntelliVue G7m anesthesia gas module
867039		IntelliVue hemodynamic extension
867040		Capnography extension
867191		Masimo rainbow® SET™ IV module
	M1006A, M1006B	Invasive blood pressure module

Fetal monitors

Ordering code	Alternative ordering code	Description
862198	M2702A	Avalon FM20 fetal monitor
862199	M2703A	Avalon FM30 fetal monitor
862334	M1350B	Series 50 XM fetal/maternal monitor
862335	M1350C	Series 50 XMO fetal/maternal monitor
862336	M1351A	Series 50A antepartum fetal monitor
862337	M1353A	Series 50IP-2 intrapartum fetal monitor
865071	M2705A	Avalon FM50 fetal monitor
865132	M2704A	Avalon FM40 fetal monitor
866075		Cableless Toco+ MP transducer
866077		Cableless ECG/IUP transducer

Defibrillators

Ordering code	Alternative ordering code	Description
860396	M3536M7	HeartStart MRx pre-hospital government without temperature
860397	M3536M8	HeartStart MRx pre-hospital government with temperature
860398	M3536M9	HeartStart MRx pre-hospital government critical care
861266	M4735A	HeartStart XL defibrillator/monitor
861288, 861493, 861494, 861495	M3535A	HeartStart MRx hospital monitor/defibrillator
861289	M3536A	HeartStart MRx pre-hospital monitor/defibrillator
861290		HeartStart XL+ defibrillator/monitor
861464	M3536M	HeartStart MRx monitor/defibrillator, airworthy no case
861465	M3536MC	HeartStart MRx monitor/defibrillator, airworthy with case
861480	M3536M1	HeartStart MRx crash cart monitor/defibrillator
861481	M3536M2	HeartStart MRx ICU monitor/defibrillator
861482	M3536M3	HeartStart MRx EMS responder monitor/defibrillator
861483	M3536M4	HeartStart MRx EMS responder monitor/defibrillator
861484	M3536M5	HeartStart MRx EMS CC monitor/defibrillator
861491	M3536M6	HeartStart MRx EMS CCT monitor/defibrillator, no Bluetooth
866199		Efficia DFM100 defibrillator/monitor
867172		Heartstart Intrepid monitor/defibrillator

